



**XMIND 2008
PRO**

WHITE PAPER

December, 2007

Contents

- 2 Introduction**
- 3 An enhanced, yet familiar, user experience**
- 6 A meeting and presentation assistant**
- 7 Capturing brainstorming sessions is easier than ever**
- 8 Moving your business forward with better collaboration**
- 9 Summary**

Introduction

In a world of information overload and businesses struggling to keep up with the pace of change, knowledge workers need effective tools to organize, analyze, brainstorm and collaborate on ideas. Software for such activities should not only be useful, but also fun and easy to use. It shouldn't have features you won't use cluttering up the interface. Rather it should provide rich, user-friendly capabilities, and work well with programs that do other tasks.

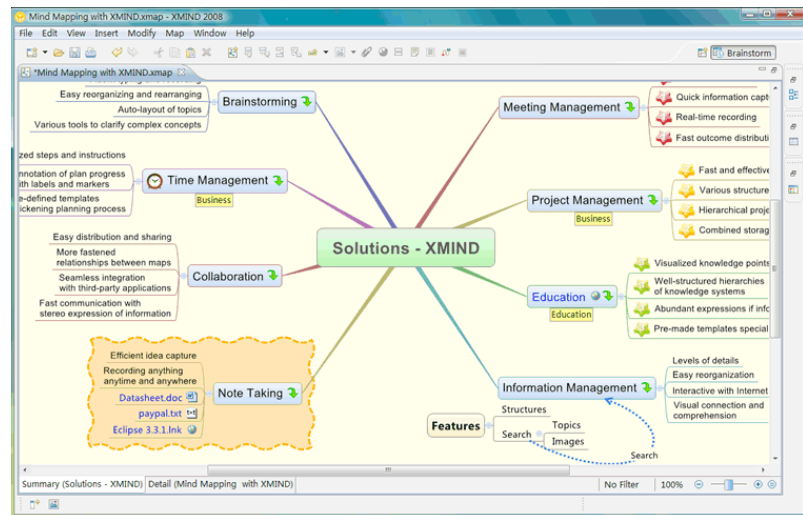
XMIND, a flexible program for creating, collecting, and organizing information, gives your creativity a kick start with an application that's designed to help you think. It's like having an extra brain - one that doesn't keep losing the car keys. XMIND will enable you and your team to work efficiently, with seamless collaboration and powerful brainstorming capabilities - regardless of operating systems!

An enhanced, yet familiar, user experience

Inheriting the rich user experience of XMIND 2007, XMIND 2008 Pro delivers compelling enhancements and new functionality for increasing effectiveness, improving efficiency and speeding up decision making processes.

Highlights

XMIND 2008 Pro inherits the rich user experience of XMIND 2007 with new enhancements and features.



Enhancements to XMIND functionality

XMIND 2008 Pro now provides an image gallery with improved themes for users to supplement the information in their mind maps.

Rich text notes are also a new enhancement. Users can add more information about the topic, insert images for illustration, and change the appearance of the text, e.g., font size, color, and other formatting. This feature is also enabled to view and edit existing notes, even in presentation mode (see below for more detail).

New features

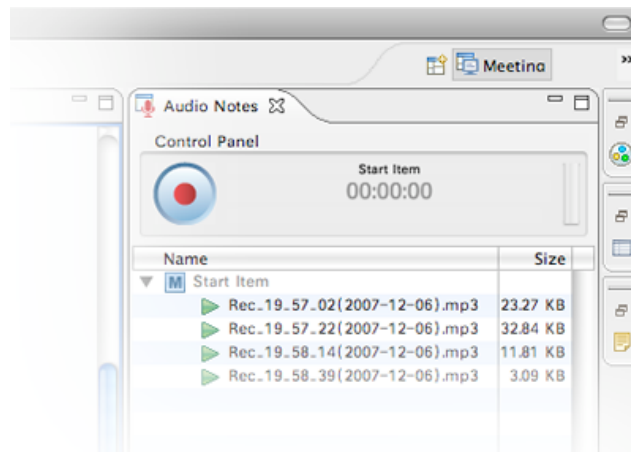
Highlights

User can record voice information in XMIND 2008 Pro.

Even more important, XMIND 2008 Pro offers many great features to help you exchange information more effectively and improve office productivity.

Audio Notes

Users can record voice information in XMIND 2008 Pro. Select a topic and click the audio Notes record button from the main toolbar. With this new feature, XMIND enables users to more efficiently communicate with team members offline and structure in-person meetings.



Map Shot

Take a snapshot of a specific region of a map, add it to the clipboard by drag-and-drop/double-click, and paste it to other applications. It's easy with Map Shot to instantly share the whole or part of a map with other remote team members.

Drilldown & Drillup

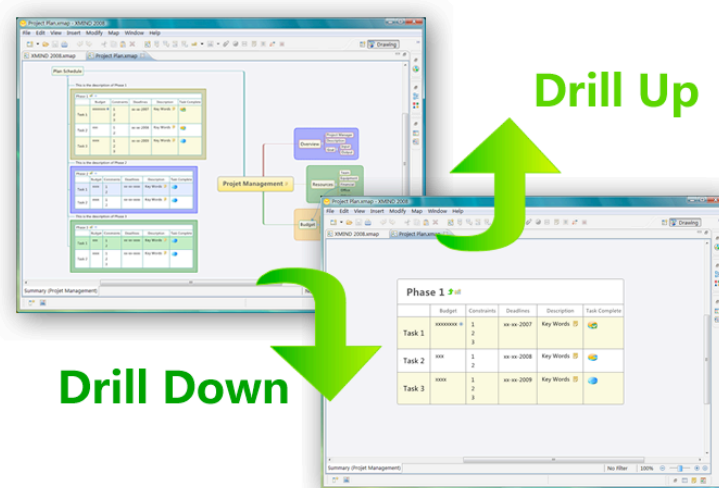
Drilldown enables users to focus on a specific branch.

Drilldown enables users to focus on a specific branch. After drilling down, the focused branch will be displayed as the central branch in the map. You can then modify the details of this branch and go back to the former level by clicking the drillup icon on the central topic.

If you don't want some information to be shown in higher levels, you can put them into floating topics which will not be seen after drilling up to the full map; this information is still viewable in 'drilldown' mode.

The drilled-down map can be exported, printed and even saved as a new workbook.

Highlights



Search Topics From The Web

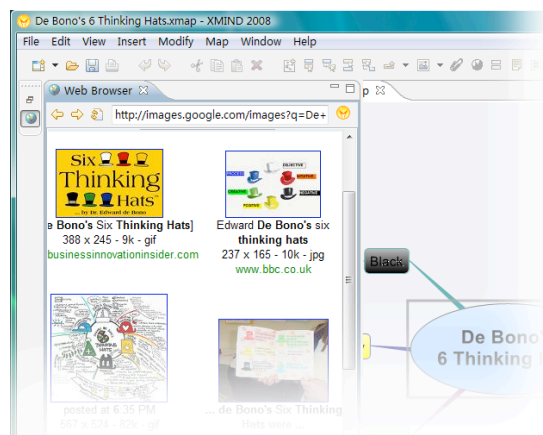
XMIND provides several search engines which allow users to view more information about their topics on the World Wide Web and incorporate what they need into their maps.

With this feature, users can capture the latest Web-based information easily and efficiently.

Users can drag information or images from the Web and simply drop them into the map.

Search Images From The Web

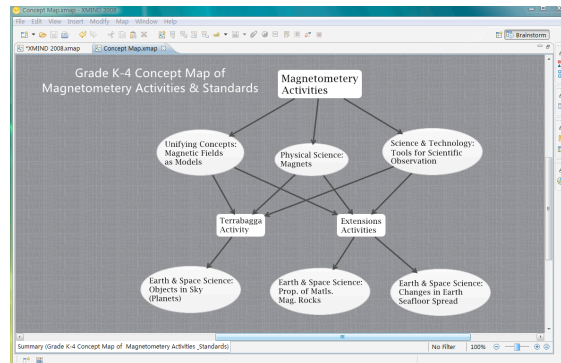
XMIND has two pre-defined image search engines: Google and Yahoo! With a few simple steps, users can drag-and-drop results into a map, adding the image to a topic or creating a new topic with the image.



Highlights

Concept Map Support

XMIND provides capabilities that allow users to put a variety of concepts into floating topics and rapidly build descriptive relationships among them through several simple operations (e.g. keyboard shortcuts). Users can even cut one relationship into two by inserting a topic.

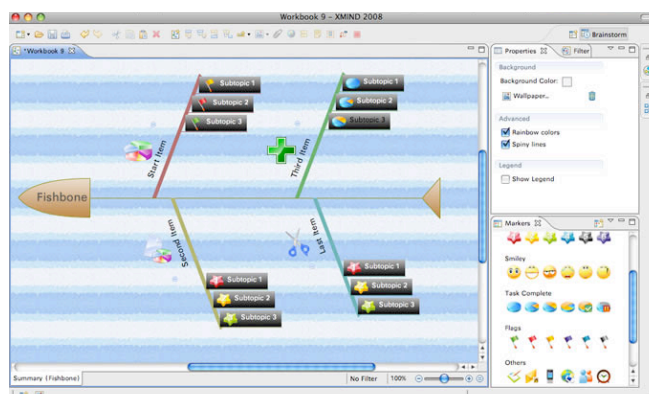


Fishbone charts will help users visually organize causal relationships in complex ideas or events, increase their awareness of cause and effect, and enable them to make adjustments to project plans and schedules on the fly!

Fishbone Chart

Also known as a Cause & Effect or Ishikawa diagram, the Fishbone chart generates a series of branches which help users visually organize causal relationships in complex ideas or events.

Business users are often faced with project management and milestone timelines. Fishbone charts are well suited to tracking such schedules. They illustrate a series of activities in a time sequence, and how the whole project is impacted by different milestones on the schedule. Each branch can also be detached into detailed recursive activities. Through Fishbone charts, users can quickly capture a glimpse of key activities and their dependencies within a schedule, and take proper measures to accelerate the project.



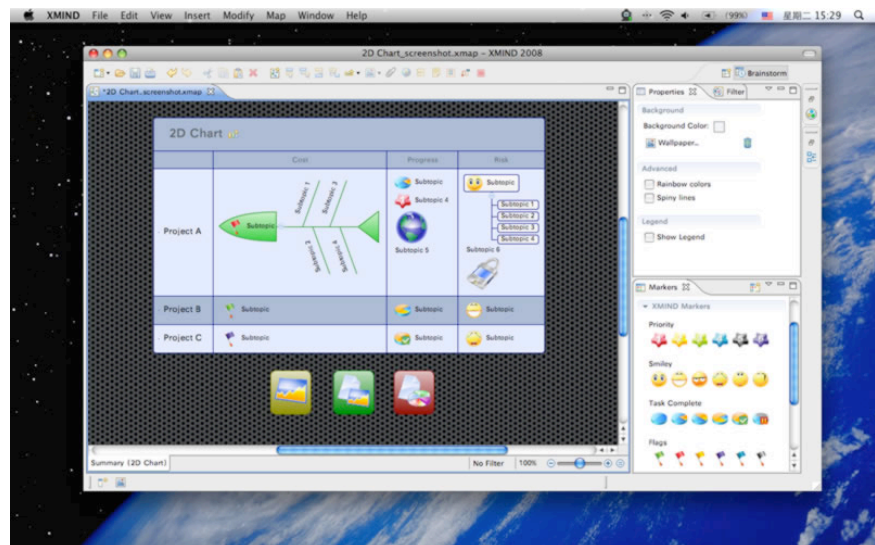
Highlights

Use 2D charts to analyze risk, strategy and other complex factors and behaviors.

2D Chart

2D charts are used to exhibit and analyze a set of complex factors and behaviors in perpendicular rows and columns. A classic example is the 'Strengths, Weaknesses, Opportunities and Threats' (SWOT) chart used for competitive analysis and strategic planning. Users can get a clear view of various perspectives and considerations in a straightforward visual format. Meaningful insights can be drawn from using 2D charts in a systematic approach.

2D charts are typically implemented in software applications that are either too rigid for manipulating data (i.e. more presentation-oriented) or visually coarse (i.e. spreadsheet-oriented). XMIND provides the best of both worlds. Users can easily create a 2D chart in an elegant visual environment. At the same time, each cell can contain multiple topics, each with their own appearance and structure.



Presentation Mode

In presentation mode, the map is projected to cover the full screen.

Using XMIND presentation mode, users can effectively present their mind maps to an audience, focusing in on a particular topic while using the whole screen to capture the full tapestry of ideas related to it.

In presentation mode, the map is projected to cover the full screen. Keyboard shortcuts help to navigate among topics and collapse/expand branches. The entire map floats and

Highlights

Users can drag files and drop them into the map as attachments, which are represented as topics in XMIND.

dynamically adjusts to keep the selected topic centered on the screen. The user can also make changes while in presentation mode, including such functionality as add/delete/modify topics, add/delete markers and labels, zoom in/out, filter, and record audio notes. After leaving presentation mode, users can choose whether to save any changes made or not.

During presentation, a control panel will be visible when users move the mouse towards the bottom of screen. Users can use it to quit presentation, move the focus, filter topics, check outline or zoom the map directly.

Attachments

Attachments are represented as topics in XMIND. External files can be attached to a topic as subtopics or elsewhere on the map as floating topics. Like any other topic, an attachment can be renamed, moved, or deleted. Users can change an attachment's color, shape, or line patterns; they can also add subtopics and additional attachments.

Attachments are saved with XMAP files and travel with them when shared with others. Viewers can easily open an attachment and save it out as a local file if so desired.

Labels

Labels are small tags on topics for simple annotation and categorization. Typically, a user defined label is positioned underneath a topic inside a yellow box.

When the user is typing a label, XMIND may suggest names from existing labels on the map. If a suggestion pops up, users can either choose the suggested label or continue typing a new label.

Spell Checker

The spell checking feature in XMIND is similar to most other productivity applications. Users can check spelling as they type text. Misspelled words are highlighted with a red underline, and users can right-click on the word to correct it. A context menu will appear with a list of suggestions. Users also can add the word to a dictionary so that it's not tagged as misspelled in the future.

Highlights

Double-click the blank area in the map to create a floating topic, type the keyword in the topic and hit 'Enter'. Then hit 'Tab' to expand into subtopics or repeat the process with a new floating topic to capture people's ideas without disrupting the brainstorming process.

Capturing brainstorming sessions is easier than ever

Ideas can come out explosively in a brainstorming session. When starting a brainstorm, you need to be sensitive to spontaneity and keep track of the seeds that are planted in the form of new ideas. It's difficult to keep up with creative brainstorming using a traditional word-processing tool .

With XMIND, a powerful, yet easy-to-use application, you can capture those ideas without disrupting the brainstorming process. Double-clicks and 'Enter' and 'Tab' keys enable you to bring people's ideas into maps as floating topics without having to worry about precise wording or positioning. Once all the ideas are collected, you can edit topics for precise wording and then simply click and drag them to appropriate positions. From there, you can focus on a particular set of topics by applying a filter, using drilldown mode, or temporarily collapsing other branches. You can also add labels, pictures and rich text notes at any time to illustrate or expand on specific points. Finally, XMIND lets you highlight conceptual relationships between two or more branches by creating visual connections between them. or by drawing boundaries around topics with similar concepts or attributes.

Highlights

Structure your meeting with XMIND

You can even record people's voices down as separate attachments to their specific points.

A meeting and presentation assistant

Use XMIND to prepare for a meeting by creating an agenda and finalizing the details within a map. The hierarchical structures and priority markers will help team members to quickly grasp the outline of the meeting.



During a meeting, the key speaker can use XMIND to make a presentation. With the map covering the full screen, the speakers and audience are able to focus on a certain point and take in the full tapestry of ideas related to that point. Team members can interactively brainstorm and capture any random ideas that happen to fly by during the discussion in XMIND. Meanwhile, if you are the scribe of the detailed meeting minutes, you can take advantage of efficient keyboard shortcuts provided by XMIND to quickly capture the discussion points. You can even record people's voices down as separate attachments to their specific points.

After the meeting, the notes captured within XMIND can easily be converted into Microsoft Word or PDF for distribution or backup.

Highlights

Push your information and resources into XMIND as topics and attachments ... Use XMIND as a 'project container'.

Moving your business forward with better collaboration

Better collaboration will bring great benefits to your business. In the latest version of XMIND, teams are empowered to creatively and effortlessly share ideas and information in a scalable visual map format. Through powerful yet simple visualization, groups can constructively work together to reach important conclusions and faster alignment.

To increase the effectiveness of communication and sharing, you can push your information and resources (such as files, documents, and images) into XMIND as topics and attachments. Then you can add decorative markers to describe, emphasize, and prioritize various items. An XMAP file can carry multiple attachments, and even multiple maps, so you can separate your work or arrangement into smaller, more focused parts. You can also create 'associated' topics which represent the same idea or concept but appear in different places. Once establishing an association between topics, any changes to one will automatically be reflected in the others.

For business projects, XMIND supports a wide range of structures to give your topics a proper organizational format. Restructuring your map into a tree chart or an org chart is useful for presenting administrative content. You can use a Fishbone chart to facilitate 'cause and effect' analysis or a 2D chart to gather related factors in a matrix form for common business techniques such as a SWOT analysis.

XMIND can be implemented as a 'project container' too. Save all of your projects to a number of maps in one main workbook, which can contain different projects or different aspects of one project. You can even append external data or documents to your maps as attachments, or use hyperlinks to incorporate website references.

summary

As a productivity tool, XMIND 2008 Pro provides you with the ability to efficiently organize, analyze, brainstorm and collaborate on ideas. All of your plans, notes, meetings, speeches, and even brainstorming sessions can be elegantly captured and organized in an XMIND map. You can export the information to other applications as required, but the big picture along with minute details all come to light through this powerful application.

Through XMIND you can release the potential of your organization's collective ideas!



1408 Building K, Huiyuan Apartment
No.8 East Beichen Road, Chao Yang
District Beijing, 100101
China

Phone +86 (10) 8498 6623

Fax +86 (10) 8497 5090

Email sales@xmind.org

Web <http://www.xmind.org>

© Copyright Mango Software 2007

Mango Software All rights reserved

XMIND is registered trademarks of Mango Software Labs in the United States and other countries. XMIND 2008, XMIND logo are trademarks of Mango Software Labs.

Eclipse and the Eclipse logo are trademarks of Eclipse Foundation in United States, other countries or both.

Java and all Java-based trademarks are trademarks of Sun Microsystems in the United States, other countries or both.

Microsoft, Windows and Office are trademarks of Microsoft Corporation in the United States, other countries or both.

Macintosh, the Mac logo are trademarks of Apple, Corporation in the United States, other countries or both.

Linux is a trademark of of Linux Torvalds in the United States, other countries or both.