



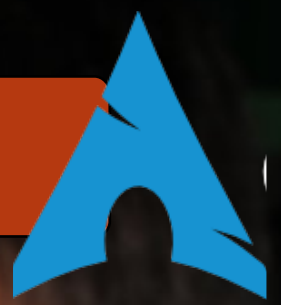
# Full Circle

THE INDEPENDENT MAGAZINE FOR THE UBUNTU LINUX COMMUNITY

ISSUE #42 - October 2010



VIRTUALIZATION  
PT5 : ARCH LINUX

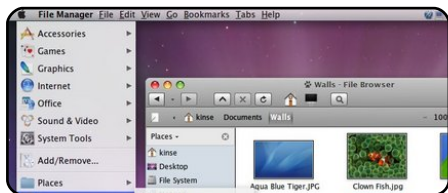


Readers  
Survey  
2010  
Results!



**NEW SECTION - Linux Lab**  
Reviving Old PC's One Distro At A Time

full circle magazine is neither affiliated with, nor endorsed by, Canonical Ltd.



My Opinion

p.26



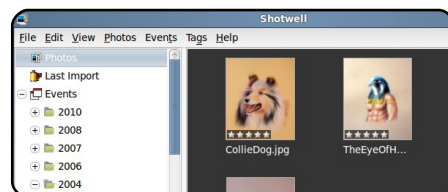
Program In Python Pt16

p.08



Virtualization: Arch

p.14



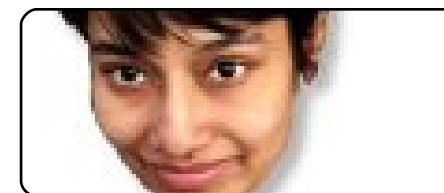
Organize Your Photos

p.17



# Full Circle

THE INDEPENDENT MAGAZINE FOR THE UBUNTU LINUX COMMUNITY



Ubuntu Women

p.39



Team Interviews

p.35

Each month, we'll be publishing interviews with LoCo (Local Community) or Translation Team members.



Linux Lab

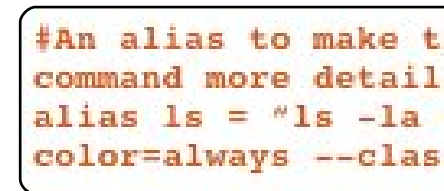
p.20

**NEW!** An old AMD 1.8GHz PC with 256MB RAM running Puppy & Slax. How will it cope?



Ubuntu Games

p.41



Command & Conquer

p.06



Review - MoonOS

p.28



Letters

p.37



Top 5

p.46



The articles contained in this magazine are released under the Creative Commons Attribution-Share Alike 3.0 Unported license. This means you can adapt, copy, distribute and transmit the articles but only under the following conditions: You must attribute the work to the original author in some way (at least a name, email or URL) and to this magazine by name ('full circle magazine') and the URL [www.fullcirclemagazine.org](http://www.fullcirclemagazine.org) (but not attribute the article(s) in any way that suggests that they endorse you or your use of the work). If you alter, transform, or build upon this work, you must distribute the resulting work under the same, similar or a compatible license.

**Full Circle magazine is entirely independent of Canonical, the sponsor of the Ubuntu projects, and the views and opinions in the magazine should in no way be assumed to have Canonical endorsement.**



## Welcome to another issue of Full Circle!

**I'm back!** Only now have I realised that without an editorial column I've no way of telling you folks what new things we have for you!

This month I've added a new feature, **Linux Lab**. I'm not sure how long it'll last but I wanted to give it a try. Most people add/remove things from their PCs to repair them. I'm more from the school of 'ooh, let's remove this and see what happens', so that's what I'm trying to do with Linux Lab, adding and removing bits of hardware and trying a Linux distro on it to see what happens, or doesn't.

Also, from next month, Lucas is going to include more GUI apps in his column. Whether it remains as **Command & Conquer** we just don't know. If you've any ideas for a new name, feel free to drop Lucas an email. His address is at the end of his articles.

But back to this month. On [page 21](#) we have the results from the readers survey 2010. Some results were a given, but some were certainly a surprise to me! All is revealed, and with pretty graphs too! [Page 12](#) is a programming competition from *freiesMagazin*. The contest doesn't end until December and I have it on authority (ie: from Greg) that he'll be giving you some helpful Python advice next month to (hopefully!) raise your chances of winning. With the Meerkat being released earlier this month we've got an in-depth review of my old friend Kubuntu (10.10), as well as a review of MoonOS.

With all that packed in to one issue this is probably the longest FCM EVER!

**All the best, and keep in touch!**

Ronnie

[ronnie@fullcirclemagazine.org](mailto:ronnie@fullcirclemagazine.org)

This magazine was created using :



## Full Circle Podcast

Released every two weeks, each episode covers all the latest Ubuntu news, opinions, reviews, interviews and listener feedback. The Side-Pod is a new addition, it's an extra (irregular) short-form podcast which is intended to be a branch of the main podcast. It's somewhere to put all the general technology and non-Ubuntu stuff that doesn't fit in the main podcast.

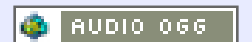
### Hosts:

Robin Catling

Ed Hewitt

Dave Wilkins

<http://fullcirclemagazine.org>







## Ubuntu 10.10 Released

Code-named "Maverick Meerkat", 10.10 continues Ubuntu's proud tradition of integrating the latest and greatest open source technologies into a high-quality, easy-to-use Linux distribution.

Read more about the features of Ubuntu 10.10 in the following press releases:

### Desktop and Netbook editions

<http://www.ubuntu.com/news/ubuntu-10.10-desktop-edition>

### Server edition

<http://www.ubuntu.com/news/ubuntu-10.10-server-edition>

Canonical has also launched the 'Ubuntu Server on Cloud 10' program. Anyone will be able to try out Ubuntu 10.10 Server Edition on Amazon EC2 for free for one hour. Visitors to the download pages will now be able to choose to experience the ease and speed of public cloud computing and Ubuntu. For a direct link to the trial, please go to

<http://10.cloud.ubuntu.com>

Ubuntu 10.10 will be supported for 18 months on desktops, netbooks, and servers.

Thanks to the efforts of the global translation community, Ubuntu is available in 37 languages. For a list of supported languages and detailed translation statistics for these and other languages, see:

<http://people.ubuntu.com/~dpm/ubuntu-10.10-translation-stats.html>

Ubuntu 10.10 is also the basis for new 10.10 releases of Kubuntu, Xubuntu, Edubuntu, UbuntuStudio, and Mythbuntu:

### Kubuntu

<http://kubuntu.org/news/10.10-release>

### Xubuntu

<http://xubuntu.org/news/10.10-release>

### Edubuntu

<http://edubuntu.org/news/10.10-release>

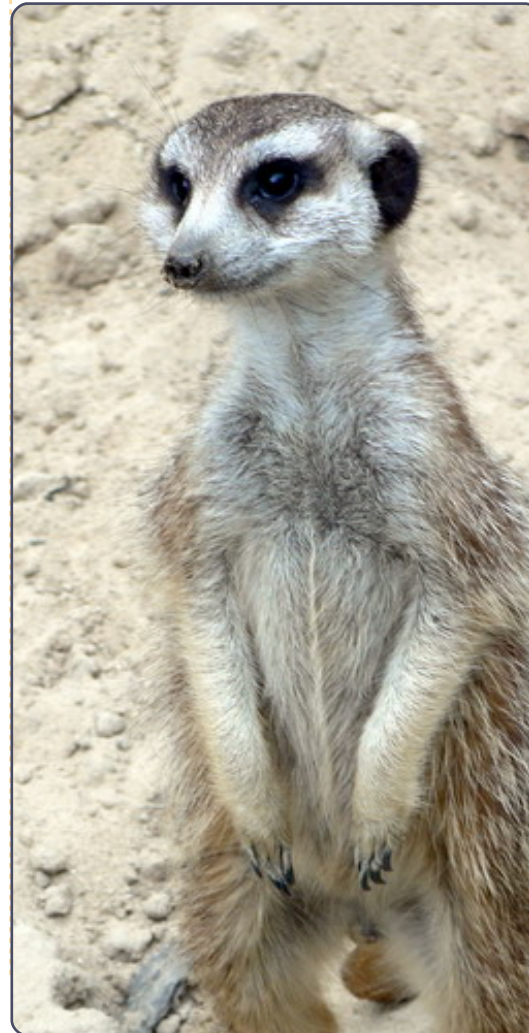
### Mythbuntu

<http://mythbuntu.org/10.10/release>

## Ubuntu Studio

[https://wiki.ubuntu.com/UbuntuStudio/10.10release\\_notes](https://wiki.ubuntu.com/UbuntuStudio/10.10release_notes)

Source: Ubuntu Weekly News



## Ideas & Writers Wanted

Full Circle magazine

Overview Code Bugs Blueprints Translations Answers

We've created Full Circle project and team pages on LaunchPad. The idea being that non-writers can go to the project page, click 'Answers' at the top of the page, and leave your article ideas, but **please be specific with your idea!** Don't just put 'server article', please specify what the server should do!

Readers who fancy writing an article, but aren't sure what to write about, can register on the Full Circle team page then assign article ideas to themselves and get writing! We do ask that **if you can't get the article written within several weeks (a month at most) that you reopen the question** to let someone else grab the idea.

Project page, **for ideas:** <https://launchpad.net/fullcircle>  
Team page **for writers:** <https://launchpad.net/~fullcircle>



## China Has Top Supercomputer

The top spot now appears to belong to the Tianhe-1A, which means "Milky Way," at a research center at the National University of Defense Technology (NUDT) in Tianjin, China.

NUDT claims the machine is 1.4 times faster than the Cray XT5 Jaguar. The computer's peak performance can hit 1.206 petaflops and jogs along at 563.1 teraflops. The Tianhe-1A system covers a square kilometer, weights 155-tons and uses 14,336 Intel Xeon CPUs and 7,168 Nvidia Tesla GPUs.

The software behind it? Linux of course. Linux has long been the operating system of choice for the world's fastest computers.

Source: [blogs.computerworld.com](http://blogs.computerworld.com)

## UbuntuGamer.com

After a low-key start, the boys (Ed and Tommy) have publicly declared the new Ubuntu Gamer site ([ubuntugamer.com](http://ubuntugamer.com)) open for business.

You'll know Ed Hewitt from Full Circle's Ubuntu Games column and the Full Circle Podcast, whilst Tommy Brun is himself a game developer.

Source: *Robin Catling*

## London Stock Exchange Smashes World Record Trade Speed With Linux

The London Stock Exchange has said its new Linux-based system is delivering world record networking speed, with 126 microsecond trading times.

The news comes ahead a major Linux-based switchover in twelve days, during which the open source system will replace Microsoft .Net technology on the

group's main stock exchange. The LSE had long been criticised on speed and reliability, grappling with trading speeds of several hundred microseconds.

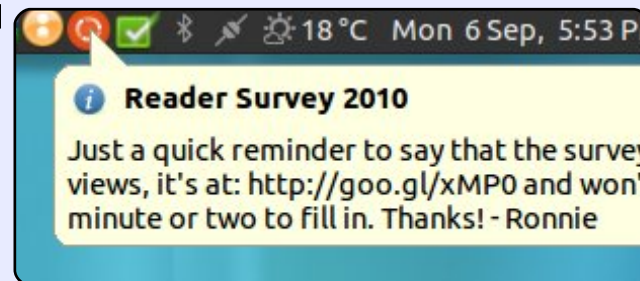
The record breaking times were measured on the LSE's Turquoise smaller dark pool trading venue, where trades are conducted anonymously. Speed is crucial as more firms trade automatically at lightning speed, using advanced algorithms.

The 126 microsecond speed is "twice as fast" as its main international competitors, the London Stock Exchange said. BATS Europe and Chi-X, two dedicated electronic rivals to the LSE, are reported to have an average latency of 250 and 175 microseconds respectively. Netiher company immediately provided details. But many of the LSE's older and more traditional rivals offer speeds of around 300 to 400 microseconds. Linux is now standard in many exchanges.

Source: [computerworlduk.com](http://computerworlduk.com)

## Full Circle Notifier - Beta Release!

Our very own Robert Clipsham (mrmonday) has released the first beta of the **Full Circle Notifier**, a small application that sits in your system tray and will not only announce issue/podcast releases, but can be set to automatically download them for you too! Several people are creating various distro packages of FCN. For more info, see the FCN Google Group: <http://goo.gl/4Ob4>





# COMMAND & CONQUER

Written by Lucas Westermann

Before I begin this month's article, I want to take a moment to explain that, as of next month, I will be expanding Command & Conquer to both GUI and CLI applications, tips and tricks, and general know-how. This is due to a number of reasons, but the main reason is that I feel it will speak to more of our reader base that way. This means that, in the future, my articles will cover both the GUI and CLI ways (where applicable). It may also necessitate a change in name, but unless I come up with something just as catchy, chances are it will remain the same.

**Correction:** In last month's Command & Conquer I referred to a "where" command. Turns out on my system I aliased "which" to "where" ages ago - and forgot about it! That means: if you had any issues with the "where" command, it's because it was actually "which". Sorry about any confusion! And thanks to both *Harold* and *Sue* for pointing this out to me.

This brings us to this month's article. I want to cover just a few basic and essential (in my opinion) commands that everyone (command-line shy or not) should at least be aware of, due to their prominence and flexibility in Linux systems. I also want to take a moment to stress that, regardless of your personal opinion of the command-line, solutions are often presented in a command-line way online, due to the fact that it applies to a wide range of distributions, as opposed to GUI methods that require you to be running a specific desktop environment or set of programs. So while you may choose to not use the command-line on your own, you may be forced to at some point, and having a rudimentary understanding of what you're doing is extremely useful.

Here are some of my "essential" commands, and a description of each:

- **man:** displays a manpage (like a manual) for a specific command (usage: man <command>)

- **vi(m):** Vi (or the Vim derivative) are basic text editors that offer a lot of functionality, and allow you to edit files without starting up a GUI app. Due to the command strings for saving, exiting, and opening files, beginners may feel more at home with "nano".

- **ls:** lists all files within a directory (by default only non-hidden files, but command-line arguments can change that).

- **cd:** stands for change directory and allows you to navigate a file tree (usage: cd <directory or path>)
- **ping:** a useful program to test network connectivity/status of a server. (usage: ping -c 5 www.google.com) – supply the -c 5 if you don't want ping to run endlessly.

- **iwconfig/ifconfig:** commands used to configure wireless and ethernet devices from the command-line (wpa\_supplicants are required for wpa networks, and dhclient for obtaining an IP address). Due to the large number of options, please see the manpage of iwconfig or ifconfig for usage.

- **halt:** a program similar to

Here are some of my "essential" commands, and a description of each...

"shutdown -h now", but requires no further information. (Usage: sudo halt). If it's not available on your system, use shutdown.

- **alias:** extremely useful in shortening long command and argument strings you use often. Usage: alias <alias\_name>="<command>"

- **rsync/scp:** allows you to copy files from a remote host over ssh (or within a local system in the case of rsync). Rsync also offers a progressbar, information on files, and much more information than is available for cp.

- **cp/mv:** cp allows you to copy files from one directory (or an entire directory) to another, and mv allows you to move a file or directory (either to rename it, or to move it to a new location).

- **cat:** a program that returns the contents of a file (useful in



combination with less or more when dealing with large files). Extremely useful for quick log reading (an example: `sudo cat /var/log/errors.log|tail -150|more`). This will show the last 150 lines of `/var/log/errors.log`, and display it in more (allowing you to slowly move through the list). For more on troubleshooting errors, see C&C in FCM23, page 6.

- **rm**: allows you to remove files or full directories (use `rmdir` for empty directories).
- **su**: allows you to switch users from the command line (usage: `su <username>`)
- **locate**: allows you to quickly find files on your computer (run `sudo updatedb` beforehand for best results)
- **ln**: allows you to create hardlinks and softlinks of directories or files (for softlinks, use the “-s” switch). Softlinks are like shortcuts, and hardlinks are physical references on the disk to another location (think of the original file as directions from place A, and a hard link is a set of directions to the same end-position, but from place B). Or, for monopoly players among you, hard links are “pass GO” transitional cards and softlinks are “go to <place>, do not pass GO”.

- **echo**: like the `php` command of the same name, this just returns whatever string is supplied afterwards. Most frequently used for quickly adding a line to, or creating, a file.

- **pwd**: print working directory is a command that displays the location you're at on your filesystem.

- **mkdir**: command to create a directory.

- **touch**: creates a blank file at the specified location (usage: `touch <path and file name>`). If the file exists, `touch` will not replace it.

- **grep**: allows you to search within output (or a file) for a specific string.

- **find**: a slower, more thorough search than `locate`. (Usage: `find <path> <arguments>`)

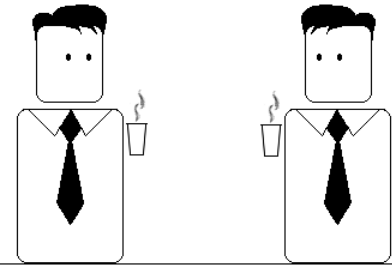
I realize this seems like a long, long list, but there are some commands I included that are duplicates, and some that are only ever used within another command. Besides, if you get stuck in a command-line environment, these commands may very well help you get back to a GUI environment. There is one command that I haven't included, since it's a non-standard command. I always install a text-based web

browser, just in case. I personally prefer `lynx`, but `links`, `elinks`, and `w3m` are all very useful. If you know even a third of this list, you should be prepared to solve (or at least troubleshoot) most `xserver` problems, in order to restore your GUI environment. If you have another “essential” command that you think I should cover/mention, send me an email at: [lswest34@gmail.com](mailto:lswest34@gmail.com). And, as always, please include “C&C” in the subject line. I hope you've enjoyed this article, and feel better prepared for any command-line work you may end up doing.

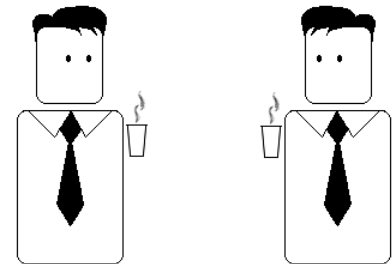


**Lucas** has learned all he knows from repeatedly breaking his system, then having no other option but to discover how to fix it. You can email Lucas at: [lswest34@gmail.com](mailto:lswest34@gmail.com).

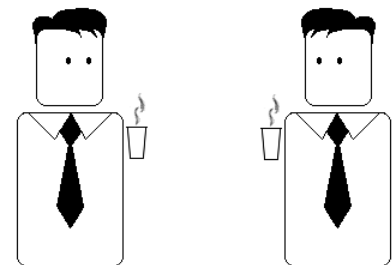
I've always adored Picasso.



Not so much his works.



But the fact that he could sell them.



by Richard Redei



**A** while ago, I promised someone that I would discuss the differences between Python 2.x and 3.x. Last time, I said that we would continue our pygame programming, but I felt that I should keep my promise, so we'll delve into pygame more next time.

Many changes have gone into Python 3.x. There is a large amount of information about these changes on the Web, and I'll include a few links at the end of the article. There are also many concerns about making the change. I'm going to concentrate on changes that affect the things you've learned so far.

Let's get started.

## PRINT

As I've said before, one of the most important issues is the way we deal with the Print command. Under 2.x we simply can use:

```
print "This is a test"
```

and be done with it. However under 3.x, if we try that we will get the error message shown above right.

Not happy. In order to use the print command, we must put what we want to print in parentheses like this:

```
print("this is a test")
```

Not a very big change, but

something we have to be aware of. You can get ready for your own migration by using this syntax under python 2.x.

## Formatting and variable substitution

Formatting and variable substitution have also changed. Under 2.x, we have used things like the example shown below left, and, under 3.1, you can get the proper result. However, that is due to change since the '%s' and '%d' formatting functions are going away. The new way is to use '{x}' replacement statements is shown below.

It seems to me to be actually

```
>>> print "This is a test"
      File "<stdin>", line 1
        print "This is a test"
            ^
SyntaxError: invalid syntax
>>>
```

easier to read. You can also do things like this:

```
>>> print("Hello {0}. I'm glad you are here at {1}".format("Fred", "MySite.com"))
Hello Fred. I'm glad you are here at MySite.com
>>>
```

Remember, you can still use '%s' and so on, but they will be going away.

## Numbers

Under Python 2.x, if you did:  
`x = 5/2.0`  
 x would contain 2.5. However if you did:  
`x = 5/2`  
 x would contain 2 due to truncation. Under 3.x, if you do:  
`x = 5/2`

```
>>> months = ['Jan', 'Feb', 'Mar', 'Apr', 'May', 'Jun', 'Jul', 'Aug', 'Sep', 'Oct', 'Nov', 'Dec']
>>> print "You selected month %s" % months[3]
You selected month Apr
>>>
```

OLD WAY

```
>>> months = ['Jan', 'Feb', 'Mar', 'Apr', 'May', 'Jun', 'Jul', 'Aug', 'Sep', 'Oct', 'Nov', 'Dec']
>>> print("You selected month {0}".format(months[3]))
You selected month Apr
>>>
```

NEW WAY



you still get 2.5. To truncate the division you have to do:

```
x = 5//2
```

## INPUT

A while back, we dealt with a menu system that used `raw_input()` to get a response from the user of our application. It went something like this:

```
response = raw_input('Enter a selection -> ')
```

That was fine under 2.x. However, under 3.x we get:

```
Traceback (most recent call last):
```

```
File "<stdin>", line 1, in <module>
```

```
NameError: name 'raw_input' is not defined
```

This isn't a big issue. The `raw_input()` method has been replaced with `input()`. Simply change the line to:

```
response = input('Enter a selection -> ')
```

and it works just fine.

## Not Equal

Under 2.x, we could test for 'not equal' with "`<>`". However, that's not allowed in 3.x. The test operator is now "`!=`".

## Converting older programs to Python 3.x

Python 3.x comes with a utility to help convert a 2.x application to 3.x compliant code. This doesn't always work, but it will get you close in many cases. The conversion tool is named (aptly)

"2to3". Let's take a really simple program as an example. The example below is from way back in Beginning Python Part 3.

When run under 2.x, the output looks like that shown above right.

Of course, when we run it under 3.x, it doesn't work.

```
File "pprint1.py", line 18
```

```
+=====+
| Item 1           | 3.00 |
| Item 2           | 15.00|
+-----+
| Total           | 18.00|
+=====+
Script terminated.
```

```
print TopOrBottom('= ',40)
```

```
SyntaxError: invalid syntax
```

We'll try to let the conversion app fix it for us. First, we should create a backup of our application that will be converted. I do it by

```
#pprint1.py
#Example of semi-useful functions

def TopOrBottom(character,width):
    # width is total width of returned line
    return '%s%s%s' % ('+',(character * (width-2)),'+')

def Fmt(val1,leftbit,val2,rightbit):
    # prints two values padded with spaces
    # val1 is thing to print on left, val2 is thing to print on right
    # leftbit iswidth of left portion, rightbit is width of right portion
    part2 = '%.2f' % val2
    return '%s%s%s%s' % ('| ',val1.ljust(leftbit-2,' '),part2.rjust(rightbit-2,' '),'| ')

# Define the prices of each item
item1 = 3.00
item2 = 15.00

# Now print everything out...
print TopOrBottom('= ',40)
print Fmt('Item 1',30,item1,10)
print Fmt('Item 2',30,item2,10)
print TopOrBottom('- ',40)
print Fmt('Total',30,item1+item2,10)
print TopOrBottom('= ',40)
```

creating a copy of the file, and append a "v3" to the end of the filename:

```
cp pprint1.py pprintlv3.py
```

There's multiple ways to run the app. The simplest way is just to let the app check our code and tell us where the problems are, which is shown below left.

Notice that the original source

code is not changed. We have to use the "-w" flag to tell it to write the changes to the file. This is shown below right.

You'll also notice that the output is the same. This time, however, our source file (shown on the next page) is changed to a "version 3.x compatible" file.

Now the program works as it is supposed to under 3.x. And, since

it was simple, it still runs under version 2.x as well.

## Do I switch to 3.x now?

Most of the issues are common to any change in a programming language. Syntax changes abound with every new version. Short cuts like += or -= sometimes come out of the blue and actually make our lives easier.

What's the downside to simply migrating to 3.x right now? Well, there's a little bit. Many of the library modules that we've used are not available for version 3.x right now. Things like Mutegen that we've used a few articles back just aren't available yet. While this is a stumbling block, it doesn't require you to completely give up on Python v3.x.

My suggestion is to start coding

```
> 2to3 pprintlv3.py
RefactoringTool: Skipping implicit fixer: buffer
RefactoringTool: Skipping implicit fixer: idioms
RefactoringTool: Skipping implicit fixer: set_literal
RefactoringTool: Skipping implicit fixer: ws_comma
RefactoringTool: Refactored pprintlv3.py
--- pprintlv3.py (original)
+++ pprintlv3.py (refactored)
@@ -15,9 +15,9 @@
     item1 = 3.00
     item2 = 15.00
     # Now print everything out...
-print TopOrBottom('=' ,40)
-print Fmt('Item 1' ,30,item1,10)
-print Fmt('Item 2' ,30,item2,10)
-print TopOrBottom('-' ,40)
-print Fmt('Total' ,30,item1+item2,10)
-print TopOrBottom('=' ,40)
+print(TopOrBottom('=' ,40))
+print(Fmt('Item 1' ,30,item1,10))
+print(Fmt('Item 2' ,30,item2,10))
+print(TopOrBottom('-' ,40))
+print(Fmt('Total' ,30,item1+item2,10))
+print(TopOrBottom('=' ,40))
RefactoringTool: Files that need to be modified:
RefactoringTool: pprintlv3.py
```

```
> 2to3 -w pprintlv3.py
RefactoringTool: Skipping implicit fixer: buffer
RefactoringTool: Skipping implicit fixer: idioms
RefactoringTool: Skipping implicit fixer: set_literal
RefactoringTool: Skipping implicit fixer: ws_comma
RefactoringTool: Refactored pprintlv3.py
--- pprintlv3.py (original)
+++ pprintlv3.py (refactored)
@@ -15,9 +15,9 @@
     item1 = 3.00
     item2 = 15.00
     # Now print everything out...
-print TopOrBottom('=' ,40)
-print Fmt('Item 1' ,30,item1,10)
-print Fmt('Item 2' ,30,item2,10)
-print TopOrBottom('-' ,40)
-print Fmt('Total' ,30,item1+item2,10)
-print TopOrBottom('=' ,40)
+print(TopOrBottom('=' ,40))
+print(Fmt('Item 1' ,30,item1,10))
+print(Fmt('Item 2' ,30,item2,10))
+print(TopOrBottom('-' ,40))
+print(Fmt('Total' ,30,item1+item2,10))
+print(TopOrBottom('=' ,40))
RefactoringTool: Files that were modified:
RefactoringTool: pprintlv3.py
```

using proper 3.x syntax now. Python version 2.6 supports almost everything you would need to write in the 3.x way. This way, you will be good to go once you have to change to 3.x. If you can live with the standard module library, go ahead and make the plunge. If, on the other hand, you push the envelope, you might just want to wait until the module library catches up. It will.

Below are some links that I thought might be helpful. The first is to the usage page of 2to3. The second is a 4-page cheat sheet that I have found to be a very good reference. The third is to what I consider to be just about the best book on using Python. (That is until I get around to writing mine.)

We'll see you next time.

### Links

2to3 usage

<http://docs.python.org/library/2to3.html>

Moving from Python 2 to Python 3  
(A 4 page cheat sheet)

[http://ptgmedia.pearsoncmg.com/imprint\\_downloads/informit/promotions/python/python2python3.pdf](http://ptgmedia.pearsoncmg.com/imprint_downloads/informit/promotions/python/python2python3.pdf)

```
#pprint1.py
#Example of semi-useful functions

def TopOrBottom(character,width):
    # width is total width of returned line
    return '%s%s%s' % ('+',(character * (width-2)),'+')
def Fmt(val1,leftbit,val2,rightbit):
    # prints two values padded with spaces
    # val1 is thing to print on left, val2 is thing to print on right
    # leftbit is width of left portion, rightbit is width of right portion
    part2 = '%.2f' % val2
    return '%s%s%s%s' % ('| ',val1.ljust(leftbit-2,' '),part2.rjust(rightbit-2,' '),'| ')
# Define the prices of each item
item1 = 3.00
item2 = 15.00
# Now print everything out...
print(TopOrBottom('=' ,40))
print(Fmt('Item 1',30,item1,10))
print(Fmt('Item 2',30,item2,10))
print(TopOrBottom('-' ,40))
print(Fmt('Total',30,item1+item2,10))
print(TopOrBottom('=' ,40))
```

Dive into Python 3

<http://diveintopython3.org/>



**Greg Walters** is owner of RainyDay Solutions, LLC, a consulting company in Aurora, Colorado, and has been programming since 1972. He enjoys cooking, hiking, music, and spending time with his family.







# COMPETITION

Written by Dominik Wagenführ

Same procedure as every day: It is late in the evening, and you're still sitting at your office desk and listening to some music. Suddenly a siren sounds through all rooms, the doors are closing automatically, and you cannot open them any more. A light green mist appears, and some creepy shapes wander around the hall. Sometimes you really hate Mondays ...

### 1. The task

The third programming contest [http://www.freiesmagazin.de/third\\_programming\\_contest](http://www.freiesmagazin.de/third_programming_contest) of **freiesMagazin** (with the subtitle "Right2Live") is based on a simple hide and seek game. There are two teams: Blue and Red, Good and Evil, Human and Zombies – depending on your preferences. At the start, all participants are in the Blue team and will switch to the Red team during the game. You will start in a room, hall, or any other free field on the map.

The aim of the game is to earn

as many points as you can. On the one hand, you can earn points by staying in the Blue team, because you will get points for each round in this team. On the other hand, you can collect points in the Red team if you catch members of the Blue team so that they will switch to the Red team too.

You will switch the team if your life energy (starting at 100.0) falls down to 0.0 (or below). The reason for the loss is the toxic fields on the map that drain your life energy. Further, you will switch to the Red team if a red player catches you (stands besides you on some field).

Your player can move (horizontally, vertically or diagonally) one field in every round, and look in some direction. The communication is done via a server-client-concept. So you need to interpret the commands given by the server (for setting game data, etc.), and send a response on which way to move and look.

The map on which you will move contains empty fields (of

course), walls, doors and keys. Before walking through doors, you need to collect the matching key somewhere on the field. So, if you do not have the right key, you may not enter a closed room (or, on the other hand, leave it).

### 2. Engine, AI and GUI

You can download the engine via FTP <ftp://ftp.freiesmagazin.de/2010/freiesMagazin-2010-10-contest.tar.gz> or via HTTP <http://www.freiesmagazin.de/ftp/2010/freiesMagazin-2010-10-contest.tar.gz> for starting the server and testing your own bot. The engine is written in C++ using the Qt4 framework.

There is a simple AI (artificial intelligence) that you can use as a test subject if your bot is smarter than this one. (It hopefully is - because the example AI just moves around randomly.)

Further, you will find a GUI inside the package for visualizing the progress of each player on the

field.

### 3. Conditions for participation

The realization of the bots can be done in any language that is workable with a current Linux system. It is important that the client must connect to the server via address localhost and port 15000. It is not allowed to connect to any other port (see GUI above), or to manipulate the server or any other client (e. g. by sending too many commands at one time). The source code of your bot must be distributed under a free license, defined by the Open Source Initiative <http://www.opensource.org/licenses/alphabetical>. Otherwise it cannot be published later.

The deadline for all submissions is "19th of December 2010, 11:59 pm". The winners will get some gift coupon for Amazon <http://www.amazon.com/> (or Bookzilla <http://www.bookzilla.de/> if you live in Germany). The first prize is a

coupon amounting to 50 Euro, the second an amount of 30 Euro and the third prize will still get a 20 Euro coupon. The other participants will not win anything but the fun of programming their bot – at least we hope that it will be fun.

You'll find a much more detailed description of the contest - including the server commands, the moving and opening of doors, and many more pictures - on the freiesMagazin website [http://www.freiesmagazin.de/third\\_programming\\_contest](http://www.freiesmagazin.de/third_programming_contest).

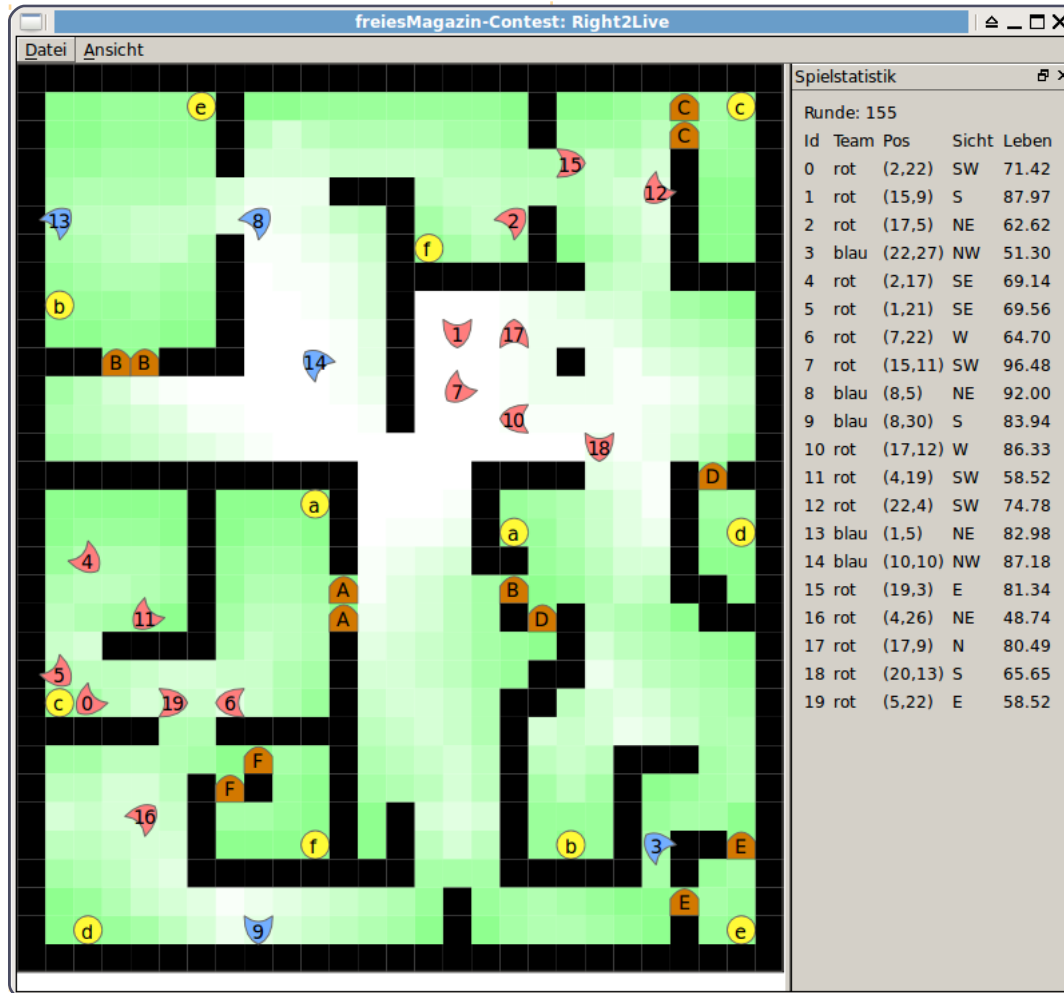
## About freiesMagazin:

freiesMagazin <http://www.freiesmagazin.de/> is a free (as in freedom) German magazine about Linux and Open Source, similar to Full Circle Magazine. The magazine will be published monthly by some volunteers who think that knowledge should be accessible by everyone.

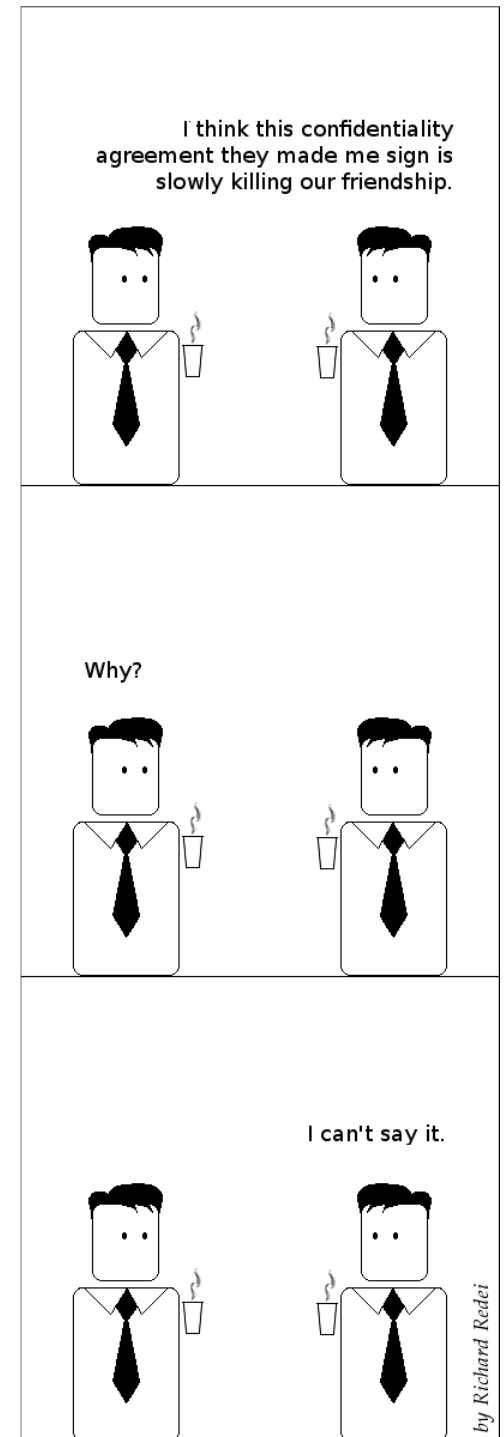
## About Dominik Wagenfuehr:

Dominik has been chief editor of freiesMagazin for some years.

He tries to spread the word for Open Source and Free Software. Further, sometimes he is involved in the German Ubuntu community.



Above: The GUI may be helpful in analyzing your own bot.





This month I decided to cover my distribution of choice: Arch Linux. It differentiates itself from Ubuntu in 3 main ways (there are countless others):

1. Packaging format (.pkg.tar.gz, instead of .deb).
2. Release model (Arch Linux is a rolling-release, where software is always updated, and there are no "releases", only updated ISO images with snapshots of the available software).
3. It's not aimed at beginners.

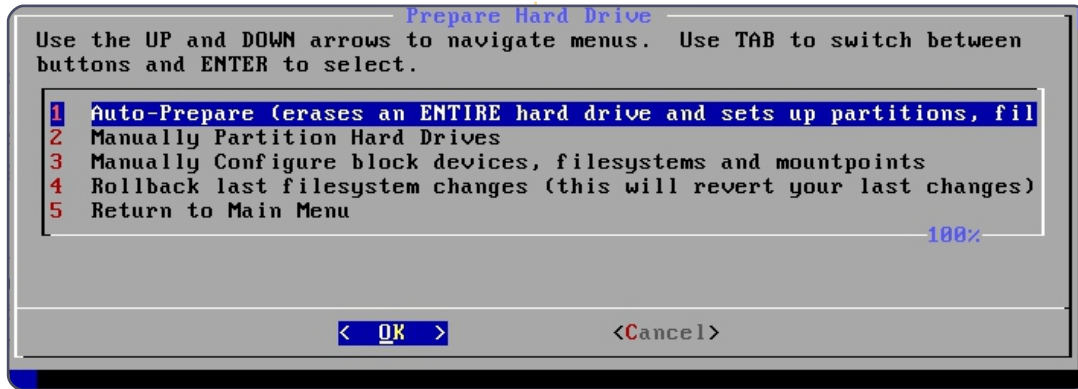
The philosophy of "KISS" (Keep It Simple, Stupid) results in a less beginner-friendly distribution. The Arch community does offer an excellent beginner's guide, but if you're not comfortable in the command-line, don't want to spend time setting up your system from scratch, or want stable software as opposed to bleeding-edge software, Arch is probably not for you.

This doesn't mean that beginners can't use Arch, but it does mean that they will need to

be prepared to learn more than Ubuntu requires them to learn. And, for anyone wondering why anyone would want to use Arch, I will list my reasons for preferring it. Firstly, it gives me fine-grained control over the programs installed, the space used, and the resources used on my PC; secondly, it offers a bleeding-edge system (and, with the right know-how, a very stable system); and lastly, it offers easy access to third-party software via the AUR (Arch User Repository). Now, on to the installation itself.

### Tools required:

- You'll need to download a snapshot ISO from here: <http://www.archlinux.org/download/> (I used the [archlinux-2010.05.core-dual.iso](http://www.archlinux.org/download/2010.05.core-dual.iso), which offers support for both i686 (32-bit) and x86\_64 (64-bit) for this article).
- Beginner's Guide (it's a wiki page that will be extremely useful, in case I move too fast/you wish to have a better explanation on certain topics): [http://wiki.archlinux.org/index.php/Beginners%27\\_Guide](http://wiki.archlinux.org/index.php/Beginners%27_Guide)



- VirtualBox
- Virtual Machine with the following specs:  
*512MB of RAM (or more/less, but I like 512MB)*  
*8GB or larger hard drive*  
*32-bit or 64-bit (up to you which you decide to run)*

### Step 1

Boot the machine, and choose the downloaded Arch Linux ISO. Once it loads the menu, choose the architecture you'd like, and wait for it to boot. Once booted, log in using "root" (no password). At this point I urge you to get comfortable with the command-line, and to create partitions with fdisk if you want to partition the drive manually, because I have never gotten used to cfdisk. If you

want to give it a shot, go ahead (it is only a virtual machine after all). If you need help with fdisk, see my C&C article in FCM41 (page 5). Also, you'll want to run the "km" command in order to change your keyboard layout (if it's not a US qwerty keyboard) before continuing with the installation. If you choose to run km, following instructions is fairly easy (locate your keymap), and then you'll be asked to choose a console font. I choose the "default8x16", but you're welcome to experiment.

### Step 2

Start the installer by running the command:

```
/arch/setup
```



## Step 3

The first step is to “choose a source”. Basically, you can choose whether you want to install the packages off the CD (probably out-of-date), or off a server. I prefer the net install, since it cuts down on updates after the installation. Just choose net, follow the instructions to connect to the Internet using the virtual Ethernet controller (choose “yes” when asked to use DHCP – at least for the Virtual Machine; if you decide to install it on a real PC, check the settings first). Also, choose a mirror near you to cut down on download times, and avoid the official archlinux.org mirror, since it's throttled (limited to 50KB/s download, I think).

## Step 4

Now, you have to set the system time. My computers are usually set to localtime (not UTC), as I believe that's what Windows uses. Once you choose the timezone and localtime, you'll be presented with what the computer thinks your time is. If it's correct, you can just move on. If it isn't you can use `ntp` to update it via the Internet, or to manually adjust the time (if you're doing a net install,

the `ntp` option really is best).

## Step 5

It's time to choose what setup you want on your hard drives. If you have already partitioned it via `fdisk`, you need only to manually assign mount points to the partitions, and if you want only the quick and easy way, choose “auto-prepare”, and choose the correct sizes for each partition. The default (256MB) will be fine for `/boot`, since it holds very little information, and swap should be about 1.5-2x your RAM, but, for the Virtual Machine (due to limited space) - or on most modern systems (due to the amount of RAM in current systems) - you won't need swap, so choose whatever value you want - I believe the default for our Virtual Machine will be another 256MB. Now, you'll be asked to choose the size of your root partition - this is not your `/home`! I generally make do with 10-20GB on real PCs for root - the PC I'm writing this on has 19GB of root file system space, and 7.5GB are still free after about 2 years of existence. In the case of a Virtual Machine, I'd give as much space as possible to the `/root` (as long as you're under 10GB of space), since

you won't be storing as much as usual in the `/home` of a virtual machine. The remaining space then (in the auto-prepare) goes towards your `/home`, which is where you store all your configuration files, your documents, pictures, movies, videos, downloads, etc., and as such should be reasonably large on a real PC (mine is 55GB, with 22GB left). As I said earlier, in the case of the virtual machine, you don't really need much (unless you plan on using it as a fully-fledged system, when you'll need a larger disk image!).

## Step 6

Choosing packages. I generally install the entire “base” package (required), and the following list of extra programs:  
**gcc** – used for compiling C programs (useful if you want to use AUR packages)  
**fakeroot** - again, required for AUR packages  
**autoconf** - same as fakeroot/gcc  
**automake** - same as above  
**make** - see above  
**patch** - see above  
**ca-certificates** - a collection of certificates for https sites and other useful security settings

(bbs.archlinux.org requires a certificate from here)  
**dbus-core** - required by HAL  
**glib2** - required by a lot of programs  
**inetutils** - offers useful internet-based tools (telnet, etc.)  
**kernel26-headers** - required to compile some programs  
**links** - CLI-based web browser (in case you need to research something while setting up)  
**mkinitcpio-busybox** - the newer version of `mkinitcpio` (creates the bootable images Arch uses)  
**netcfg** - very useful program for wireless networks  
**openssh** - provides an SSH client  
**sudo** - allows you to run programs as root from your user account (very useful – remember to set it up from the root account first!)  
**xz** – new packaging format for the mirrors (`.pkg.tar.xz`) makes this a requirement (it would be installed on the first update anyways, but what's done now is done).

All the packages are in the long list that appears in the second step of “select packages”.

## Step 7

Install packages (no real user input required here).

## Step 8

Configure system. This is the most difficult step for most beginners, since it has a very strong impact on your overall system - making mistakes much more noticeable. You'll be asked what text editor you want to use. I recommend nano for beginners; for those who are used to IBM PC-based text editors, JOE might be best; and vi is for those who are comfortable with it. Basic steps to take:

- Add your timezone/hardwareclock information to the rc.conf file (hardwareclock=UTC or localtime)
- Set your keymap if it's non-standard (i.e. de or de-latin1 for German keyboards) – again, in the rc.conf file
- Choose a hostname for your computer under the networking system in your rc.conf. And ensure that the same hostname is at the end of the line with localhost (or on a separate line, as seen below). If done incorrectly it can cause poor network performance/sluggish programs.

```
#
# /etc/hosts: static lookup
# table for host names
#
```

```
#<ip-address>
<hostname.domain.org>
<hostname>
127.0.0.1
localhost.localdomain
localhost
127.0.0.1
Monster.mydomain.com
Monster
```

- In the mirrorlist file, uncomment (delete the “#” symbols) all the servers for the country in which you live (will make updates much, much faster)
- Set a root password.

Once you've done all that, take a moment to make note of what other files are listed there, so you can find them again later if you need to make adjustments (it's usually specified in the wiki, but it hardly takes a moment).

## Step 9

Install bootloader. Here you'll most likely want to install GRUB, since that's what every Ubuntu user will be used to. Once you select a program, you'll be asked to check the configuration (here you can add information for a second OS, change the default, etc.), and then you'll need to select the main hard drive you want to

```
GNU nano 2.2.4 File: /mnt/etc/rc.conf Modified
# NOTE: Use of 'MOD_BLACKLIST' is deprecated. Please use ! in the MODULES array.
#
MOD_AUTOLOAD="yes"
#MOD_BLACKLIST=() #deprecated
MODULES=()

# Scan for LUM volume groups at startup, required if you use LUM
USELUM="no"

-----
# NETWORKING
#
# HOSTNAME: Hostname of machine. Should also be put in /etc/hosts
#
HOSTNAME="Arch-Virtual_"

# Use 'ifconfig -a' or 'ls /sys/class/net/' to see all available interfaces.
#
# Interfaces to start at boot-up (in this order)

G Get Help  O WriteOut  R Read File  Y Prev Page  K Cut Text  C Cur Pos
X Exit     J Justify    W Where Is  U Next Page  U UnCut Text T To Spell
```

install GRUB on (unless you're installing it to a partition, but then you should know what you're doing!). For the virtual machine, choose “/dev/sda”, or whatever value is present without a partition number.

Well, that about covers the installation of Arch Linux in Virtual Box. You'll now need to decide on a desktop environment or WM, and install the required software (it's all explained very thoroughly in the Beginner's Guide I link to above). Happy fiddling! Also, next month I'm aiming to cover Xen in a Debian environment, due to a reader's request – barring any

unforeseen complications (sorry, I didn't get it done by this month!). If you have any questions/requests, feel free to shoot me an email: [lswest34@gmail.com](mailto:lswest34@gmail.com). Please include Virtualization or FCM within the subject line if you do.



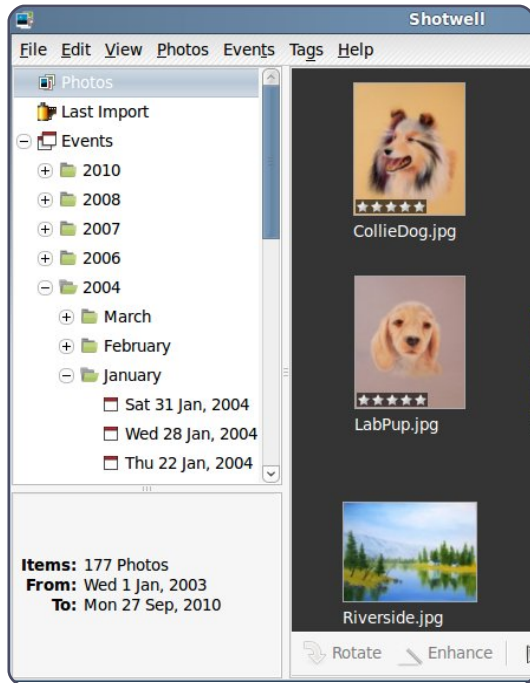
**Lucas** has learned all he knows from repeatedly breaking his system, then having no other option but to discover how to fix it. You can email Lucas at: [lswest34@gmail.com](mailto:lswest34@gmail.com).



# HOW-TO

Written by Ronnie Tucker

# Organise Your Photos



If you are using Ubuntu 10.10, **Shotwell** is the default photo manager. With older versions, you will need to install it using Software Center or Synaptic.

When you run Shotwell, the first thing is to import existing photographs. Click File > Import From Folder from the menu, choose a folder and click OK. As Shotwell imports the photos you'll see your photos flashing past. You

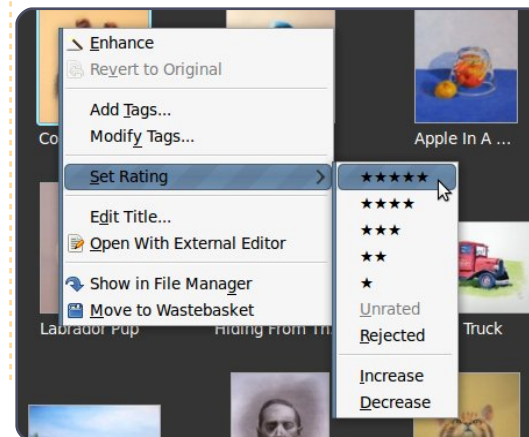
can also import from F-spot.

If Shotwell encounters a duplicate (or several), it will inform you that it has ignored one of the duplicates.

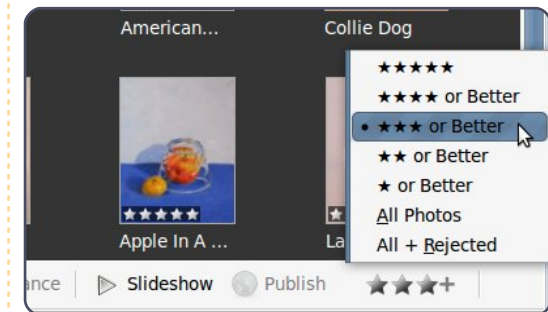


The first thing you probably want to do is go through your collection and remove any photos that you don't want shown, or photos that are duplicates that Shotwell didn't detect. To do this, you simply select the photo or photos (select several photos by holding down the CTRL key). If you need to see more info on a photo before removing it, you can click View > Extended Information. With your photos selected, choose Edit > Remove From Library. Be careful that you click 'remove' in the pop-up window, because, if you click 'trash', you'll be deleting them permanently from your computer.

Photos are organised (or sorted) by title, date, rating, or by tags. It's probably a good idea to go through your photos and give them meaningful names, because most cameras (even mobile phones) will give them cryptic names, which may or may not include camera type and/or date. You can edit a title by right clicking on a photo and choosing Edit Title. If you can't see a photo's title, click View > Titles. You can also rate photos by right clicking and choosing Set Rating and the number of 'stars' to give it from a top score of five. Again, you can select several photos and assign the same rating to all selected photos.



Now, if I wanted to, I can show only photos that I rate as five stars - either by using View > Filter Photos (and selecting the rating) or by using the star menu at the bottom right of the Shotwell window:



Tags are another way to sort your photos. This is done by assigning a word (or words) to a photo. If several photos use the same tag, then they will show in a sort using that tag. For example, I have two photos here which are paintings of dogs: one is a labrador and the other is a papillon. I right click on the labrador photo, choose Add Tags and in the pop-up window I enter:

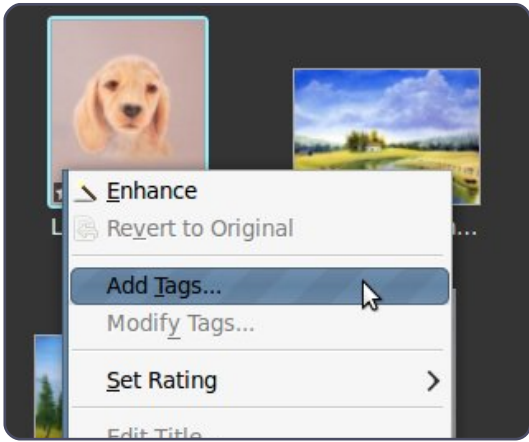
**labrador, dog**

**NOTE:** The comma separates the two tags; omitting the comma



# ORGANISE YOUR PHOTOS

makes it a single tag: 'labrador dog'.



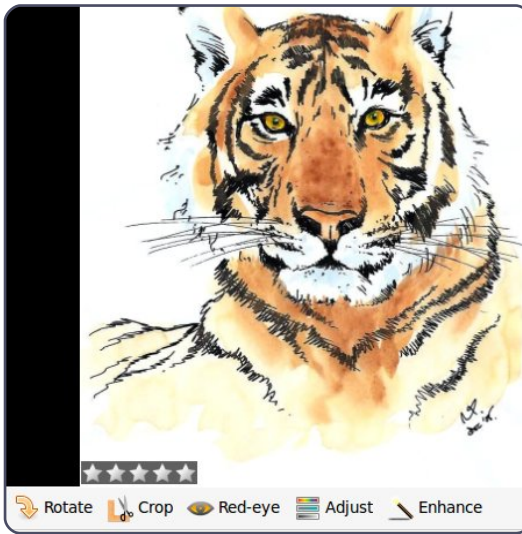
On the left side of the Shotwell window, my tags (labrador and dog) are shown. Now I add the tags 'papillon, dog' to my other photo. In the left panel I have only one new tag ('papillon') as both photos share the 'dog' tag. So, when I click on the 'labrador' tag, I see only one photo, but, if I click on 'dog', I see both photos.

It's another laborious task (like rating), but now you should 'tag' all your photos. If it's any help, you can drag and drop your photos onto the tags on the left panel.

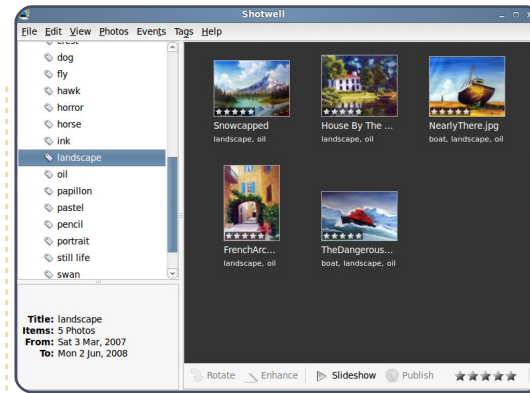
Beware not to go overboard with tags as getting too detailed will leave you with a giant list of confusing tags. I tag my paintings by medium (pencil, watercolour,

etc.), then subject (animal species, car, etc.), and by category (portrait, commission, etc.).

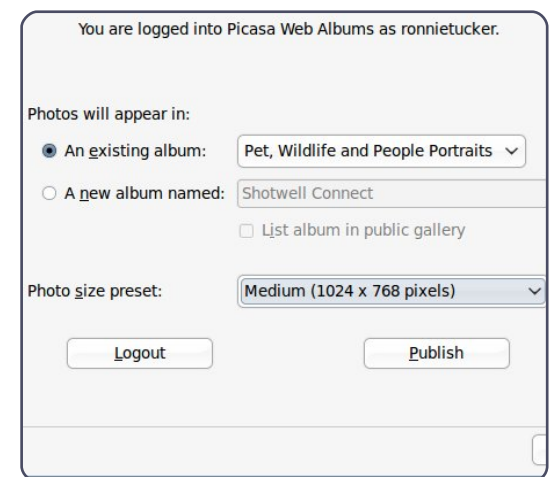
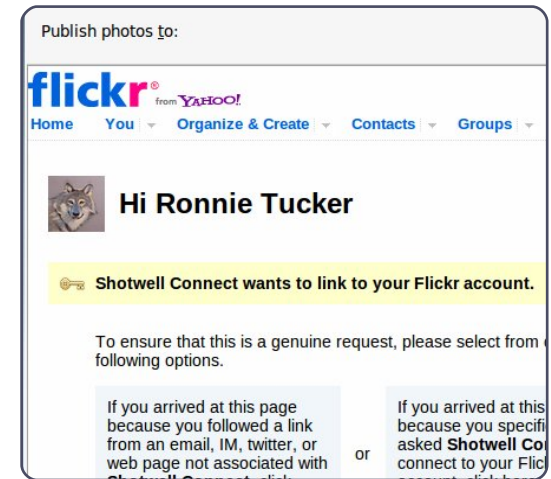
Now that I have my photos in some semblance of order, I can, at my leisure, go through them and make any modifications such as colour correction, cropping, and such-like. Viewing a photo is done by double clicking the thumbnail. Double clicking again returns it to a thumbnail. While the photo is shown large within the window you will see that you can rotate, crop, fix red eye, adjust colours, and enhance your photo's appearance automatically.



Now, I can sort my perfect photos to show, for example, only those tagged as landscapes rated five stars.



And, what if you want your photos online? Well, Shotwell has a publishing option. You can select a photo (or photos) and click the Publish button at the bottom of the window; from here you can publish to Facebook, Flickr or Picasa:



There are many other things you can do with Shotwell, such as creating 'Events' - which let you sort photos by date and so on. You can even create slideshows of your memories. Although I'm sure there are probably some photos you'd rather forget...



## Guidelines

**T**he single rule for an article is that **it must somehow be linked to Ubuntu or one of the many derivatives of Ubuntu** (Kubuntu, Xubuntu, Lubuntu etc).

Write your article in whichever software you choose. I would recommend OpenOffice, but **PLEASE SPELL AND GRAMMAR CHECK IT!**

## Writing

In your article, please indicate where you would like a particular image to be placed. Please do not embed images into your Open Office document.

## Images

Images should be JPG with low compression.

Regarding image sizes: if in doubt, send a full size screengrab and we will crop the image.

If you are writing a review, please follow the guidelines shown here.

For a more detailed list of the style rules and common pitfalls please refer to: <https://wiki.ubuntu.com/UbuntuMagazine/Style> - in short: US spelling, no l33t speak and no smilies.

When you are ready to submit your article please email it to: [articles@fullcirclemagazine.org](mailto:articles@fullcirclemagazine.org)

If you can't write articles, but hang out in Ubuntu Forums, send us interesting forum threads that we could print.

## Non-English Writers

If your native language is not English, don't worry. Write your article, and one of the proofreaders will read it for you and correct any grammatical or spelling errors. Not only are you helping the magazine and the community, but we'll help you with your English!

## REVIEWS

### Games/Applications

**When reviewing games/applications please state clearly:**

- title of the game
- who makes the game
- is it free, or a paid download?
- where to get it from (give download/homepage URL)
- is it Linux native, or did you use Wine?
- your marks out of five
- a summary with positive and negative points

### Hardware

**When reviewing hardware please state clearly:**

- make and model of the hardware
- what category would you put this hardware into?
- any glitches that you may have had while using the hardware?
- easy to get the hardware working in Linux?
- did you have to use Windows drivers?
- marks out of five
- a summary with positive and negative points

**You don't need to be an expert to write an article - write about the games, applications and hardware that you use every day.**



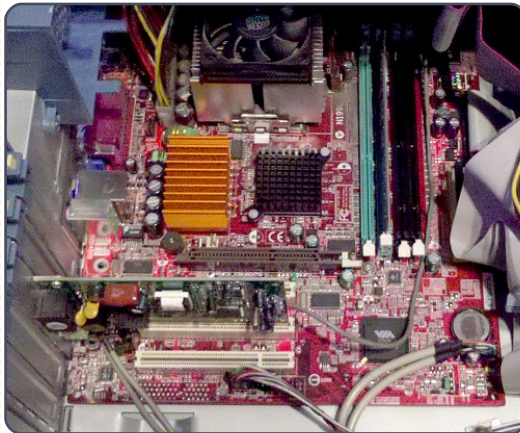
# LINUX LAB

Written by Ronnie Tucker

**W**elcome to a new feature of Full Circle, the **Linux Lab**. In this section, I hope to use old computer hardware to create unusual PC machines and try Linux distros on them to see how the machines or the distros cope.

I'd like this feature to become an interactive section of Full Circle where you, the readers, could suggest a configuration of hardware to try. I'm also hoping to record videos of some of the running distros - to let you see how fast/slow the PC/distro is. But, and here's the catch, I have only a very (very!) limited amount of hardware to try, so, for this first part of Linux Labs, I'm going to run the PC I acquired, as is, with Puppy Linux 5.1.1 (LuPu), DSL (Damn Small Linux), Tiny Core, and Slax. Hopefully, I can, over time, gather together a bundle of hardware to mix and match. If you've any hardware you can spare, please send me a private message (ronniet) through Ubuntu Forums or email me (Ronnie) at:

[ronnie@fullcirclemagazine.org](mailto:ronnie@fullcirclemagazine.org). Unfortunately, I can't pay for postage or pick-up, but you will receive credit for helping Full Circle magazine and this section. And, really, I don't expect you to post me large towers and such like, even just old hard drives, sticks of RAM and such like are most welcome.



## PC Specs:

- AMD Athlon (256Kb cache) @ 1.79GHz
- 256 MB SDRAM
- MSI MS-6738 motherboard
- S3 VT8375 video controller (ProSavage8) @ 1280 x 1024
- 35GB Seagate hard drive

For reasons unknown, neither

DSL nor Tiny Core would even boot. From beep to ready took almost three minutes for either Puppy or Slax. Unexpectedly, both played XVID and MP3 out of the box. The PC isn't connected to any network (wired or wireless), so it couldn't possibly have automatically downloaded codecs, so that's a definite plus for Puppy and Slax! Even Linux Mint 9 on my own desktop machine had to download codecs. One downside of Puppy was when I played a 175MB video file. At random points in the video the entire PC would freeze and I had to reboot. It was definitely something to do with losing sight of the USB port/stick, because, after a reboot, the computer wouldn't boot from USB. It took a couple of plug/unplug actions before it would recognise the USB stick again. Very odd, but Slax played the video without any difficulty. I also tried playing a short (8MB) MP4 video and it played fine, on both Puppy and Slax, with no freezing.

PDF files opened, and didn't

take up much of the PC's resources, initially, but skipping forward a few pages caused the viewer to pause, load new pages, and the CPU load to rise to 60+%, but that usage would drop once the page(s) had loaded. That applies to both OSes.

I also tried an OpenOffice document - both loaded it fine using their respective equivalents, Abiword in Puppy, kWord in Slax.

Apart from the video-playing glitch, the system was completely usable with both Puppy and Slax, although I did find Slax to be a touch more responsive in menu clicks. I couldn't test networking, but I did this on purpose so that the PC was isolated and couldn't grab files from the Internet, as I know (from the survey results) that not all of you have access to fast broadband and/or wireless.

Next month, I'll completely remove the hard drive and see which OSes are usable entirely from USB, especially with saving files to itself.





# Readers Survey 2010 Results

Written by Ronnie Tucker

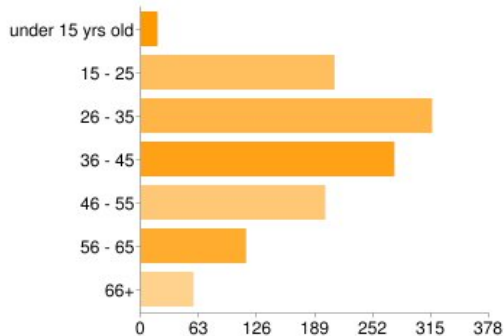
The results are in! And I want to thank each and every one of you who took part in the survey, all 1,190 of you.

On with the results!

## Gender

This one was hardly a surprise: 97% are male while only 2% (29 of 1,190!) are female. Seven people declined to state their gender.

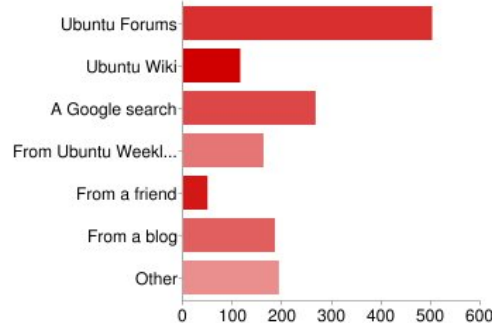
## How Old Are You?



This one was a bit of a surprise to me. I was expecting most of you folks to be teenagers or early twenties, but only 18% were 15-25 years of age, while 27% were 26-35 and 23% were 36-45. So most

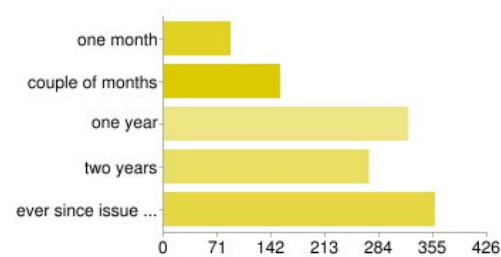
of you readers are mid-twenties to mid-forties. 17% were 46-55 while 15% were 56 and over.

## How Did You Find Out About Full Circle?



This one was also a surprise to me: it seems that over 40% of you found Full Circle via Ubuntu Forums! I assumed most people found us through blogs, but only 16% of readers found us on a blog, while 22% found us using Google. Only 4% found us via friends.

## How Long Have You Been Reading Full Circle?



It's good to know that you folks are staying with us: 30% have been with us since FC#01! Over 20% have been with us for two years, and nearly 30% for one year, while 20% are new readers.

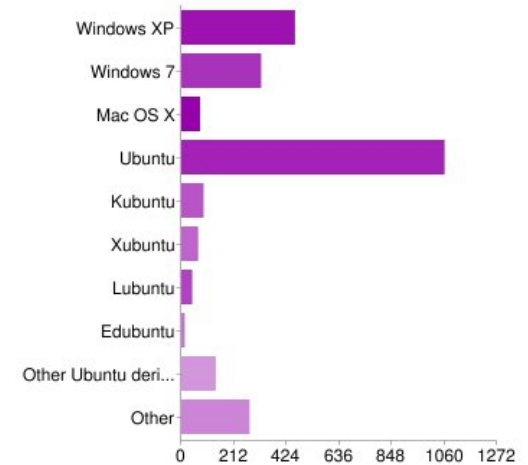
## Do You Keep Your Copies Of Full Circle?

It's also good to hear that over 60% of you keep all the PDFs. Only 3% print out the PDF. I know that some of you don't like printing the landscape format PDF, but we keep this format for easier on-screen reading. Only 14% of you never keep the PDF.

## Which Operating System(s) Do You Use?

No great surprise here: 89% use Ubuntu, while over 60% use

Windows, and only 6% use OSX.



## Which Version(s) Of Ubuntu Do You Use?

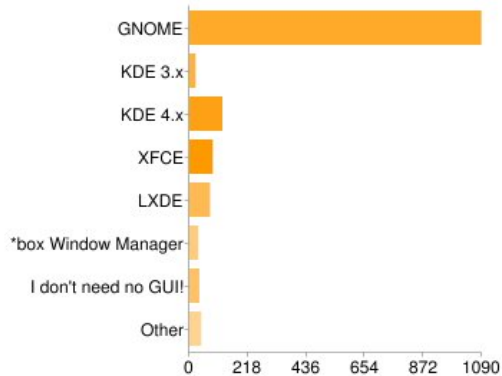
Almost 90% of readers use 10.04 - Lucid Lynx. Only 10% use 9.10 (Karmic), and the same percentage use the newer 10.10 (beta, as of this writing), while 5% still use 9.04 (Jaunty).

## Which Desktop Environment(s) Do You Use?

This one was another surprise to me. I didn't think that Gnome

# READERS SURVEY RESULTS 2010

would get over 90% of the votes. KDE 3 and 4 combined received only 12%. XFCE and LXDE got 7% each, while the others garnered approximately 3% each.



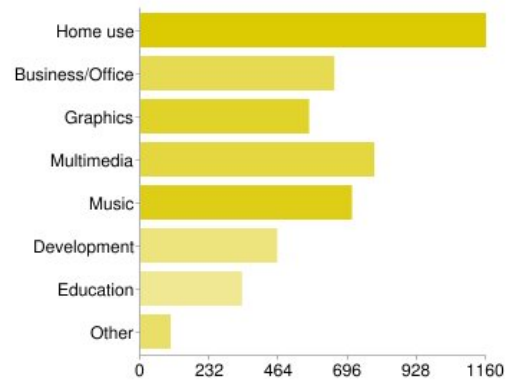
## Where Do You Use Linux?

Another no-brainer here. Almost 99% of you use Linux in your home, nearly 40% use it in business, and 13% use it in school.

## What Do You Use Linux For?

This one was quite an even spread (in most cases). Almost all of you use Linux for home use. Nearly 50% use it for business/office use, and a similar percentage use it for graphics. Slightly less use it for development and educational use.

Over 60% use Linux for music, and the same percentage use it for multimedia.



## Down To Business - Please Rate:

### Ubuntu News

It seems you like Ubuntu news: 30% think it's good, 42% think it's pretty good, but only 19% think it's great - to be fair, however, it is a rather new feature.

### Linux News

Almost half of you think it's pretty good, 33% think it's good, but only 18% think it's great.

### Command & Conquer

Quite a mixed reaction on this one.

Approximately 10% don't read it, the same percentage think it's not bad, while over 25% think it's good, pretty good or great.

## My Story

Same here, over 30% find it good or pretty good, with approximately 15% finding it not bad, pretty good or great, and 12% not reading it.

## My Opinion

Over 10% find the opinions section either not bad, or great, while over 30% find it good or pretty good.

## Reviews

This one was pretty clean cut: you like reviews! Over 30% think they are good, while over 40% find them pretty good. Only 2% don't read the reviews.

## Interviews

The MOTU, Loco, and Translators interviews all scored about the same. Roughly 20% of you don't read them, over 30% think they're good or pretty good, while only

**I didn't think GNOME would get over 90% of the votes.**

9% think they're great. It sounds like it might be time to cut back on the interviews.

## Letters

Over 30% found the letters pages to be good or pretty good, while over 10% found them to be not bad or great. Only 4% don't read the letters pages.

## Ubuntu Women

Having seen the results for the gender question, this one shouldn't be much of a surprise, but it is! Almost 30% found it great or pretty good, 10% think it's not bad or great. Only 10% don't read it. Quite surprising for a readership that's 97% male!

## Ubuntu Games

Only 14% don't read about games,

almost 30% found it good or pretty good, while about 15% found it not bad or great.

## Q&A

This one was another no-brainer. A total of 8% found it not bad or didn't read it, over 20% found it good or great, and over 40% thought it's pretty good.

## My Desktop

Over 25% think My Desktop is good, pretty good, or great. Only 14% skip over it.

## Top 5

A total of only 7% don't read it, or found it not bad. 40% think it's pretty good, 21% think it's good, and over 30% think it's great.

## What Should We Cover More/Less Of?

Out of graphics, music, office, games, Internet, development, and video, only games came out different - most of the others were 50/50 for same/more which doesn't really sway things one way

or the other. Of games, half of you say we should cover the same while only 25% say cover more. A lot of you wanted reviews of business or scientific applications, which we'd be more than willing to print, but we need business owners and scientists to step up with the reviews.

## Other Distros in Full Circle?

It seems that three-quarters of you are more than happy to see other distros in Full Circle, while only 21% say no. Out of the distro options we gave, the results were all similar: most wanted the same while roughly 10-15% said less or more, which does seem to contradict the yes/no vote. But definitely a hefty chunk of you want more Linux Mint, and I'm more than happy to provide it. Many of you also want Arch Linux articles - and Lucas Westermann has promised me some. I'll even see if I can coax Robert Clipsham out of semi-retirement for some Arch articles.

## Level Of Articles

## Beginners

Just over half of you want the same amount of beginners articles, while only 37% want more.

## Intermediate

Almost half of you want the same amount, but more than half of you want more intermediate articles.

## Advanced

Only half want the same amount of advanced, while nearly 40% want more.

## How Do You Rate The Current Design?

I was worried about this one, but thankfully it seems that over half of you give the current design 4/5, and over 35% giving it 5/5! Thank you! Only 11% gave it 3/5 with 2% giving it 1/5 or 2/5. It also seems that the font is just the right size: almost 75% give it 3/5, while only 14% want it a touch larger.

And, so, another survey comes to an end. Like I said, I want to thank all of you who took the time to complete the survey. I'll definitely be thinking about what I can change to make Full Circle even better. Don't worry, there won't be a sudden revamp of FC; any changes will be small and staggered out over months.

What's that? I missed the sections on design ideas and suggestions? Indeed I did. Next month I'll be printing some of the best suggestions and design ideas put forward by you guys, and addressing them.

**[...] three-quarters of you are more than happy to see other distros in Full Circle...**

# MY STORY

Written by Slamet Badwi Aryo

I've been interested in computers since I took IT lessons in junior high in 2005. The computers used for training were older Windows versions. I didn't know anything about computers then. Our exercises were limited to very basic computer use: turning on and off the computer, and typing.

I received further computer training in high school, where I also became acquainted with the Internet. We worked first on Windows 2000 and then on Windows XP and Vista.

I became rather addicted to the internet, and, not having my own computer, I surfed the Internet at an Internet café. One day my friend complained that the café he visited did not use Microsoft Office applications. Instead, it used Linux applications. I had never heard of Linux before then.

I went to the café and saw computers that had OpenOffice.org installed. I didn't know then that Windows and its

applications were proprietary. This contact led me to look for alternatives to Windows - an OS too expensive for me.

I searched the Internet for information on Linux, and read books about Linux. The latter discussed various Linux distributions without mentioning Ubuntu, because its publication preceded Ubuntu's first release. When I learned about Ubuntu, I obtained a free Ubuntu Live-CD, version 8.04.2, from Ship-it.

Months later, I got a second-hand computer with a pirated version of Windows XP SP2 installed. The specs were Pentium IV 1.9 GHz processor, 256 MB RAM, VGA Nvidia GeForce mx200 32 MB, 40 GB HDD, and no Internet connection.

After several months, I dared to install Ubuntu on a new partition based on the limited knowledge I had acquired. I thought that installing applications in Ubuntu was the same as installing in Windows. But I was wrong! I didn't

understand why Ubuntu could not play music. I searched the Web unsuccessfully for solutions. I did not know then about the existence of Ubuntu user groups on the internet or in my city.


I gave up and reinstalled Windows. I gave my Ubuntu CD to a friend, because he was interested in it. A few days later, he told me that he found out how to play music in Ubuntu by using RealPlayer for Linux.

So, I installed RealPlayer in Ubuntu using Terminal commands, and then was able to play music even in MP3 format! Subsequently, I've installed many packages in Ubuntu with Terminal commands.

I continue to search the Web for information on and assistance with Ubuntu. I now have Ubuntu 10.04 (Lucid Lynx) installed in my only computer, which is not yet connected to the Internet. I can not,

unhappily, enable Ubuntu's beautiful desktop effects in my computer because its VGA memory is inadequate. I am very grateful for the tutorial on the offline installation of packages published in FCM32. I translate Full Circle articles into Indonesian, and show them in my blog at [sabilurasyad.wordpress.com](http://sabilurasyad.wordpress.com). Thank you Ubuntu and Full Circle!

## Your Ubuntu CD Request

 We can send you a CD free of charge, but it will take from six to ten weeks to deliver, so you may prefer to [download the CD image](#) and record it yourself.

**New request**

Just enter your address below and we will send you 1 Ubuntu CD (1 PC Edition) of the 10.10 (Maverick Meerkat) release.

You can make a [special request](#) for different quantities, but note this will take longer to process and may not be approved at all.

**Shipping details**

Name \*

Organization

Address \*

City/Town/etc \*

State/Province

Postcode

Country \*   
Choose one

Phone \*

Please double-check your address before submitting your request.

[Submit Request](#)



# MY STORY

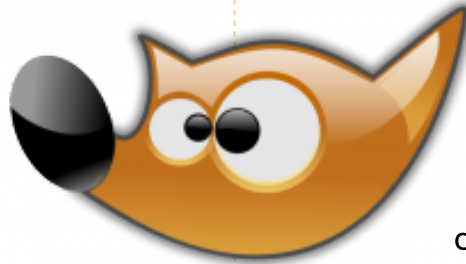
Written by Saliya Hamparawa

I'm from Sri Lanka, and I first heard of Linux when I was in school. But I hadn't seen an Ubuntu distribution until a friend ordered copies of Ubuntu Breezy Badger (version 5.10).

Since I had never used Ubuntu, I was eager to try it. So I borrowed a copy from the friend, booted my Pentium IV desktop, and tried the Live CD. My Nvidia card functioned properly, and I was amazed by the desktop effects. But I was upset that Breezy couldn't play any of my MP3 files, and did not show my NTFS drives. Every time it tried to play, it tried connecting to the Internet, which I didn't have. I wondered how all my drivers were able to work out of the box. In Windows, I had to install at least 6 drivers, but in Ubuntu they just worked! I played around many times with my live CD, but didn't have any need to try the install CD, because I had my free Windows copy. But I remembered to order the latest copy from the Ubuntu shipit.

One day, Windows wouldn't

boot, and it also wouldn't install. Every time I tried installing it, it showed a blank screen and halted. Later, I figured out that this had something to do with the Master Boot Record. So, I decided to install Ubuntu 6.10. I formatted the Windows partition and everything went fine. I could access the NTFS drives. But the desktop effects weren't working, and I couldn't increase the screen's resolution beyond 800x600 even though 1024x768 was listed. So I went to an Internet café, did some research, and found out that the problem was in the nVidia drivers. I downloaded the nVidia driver and tried installing according to a blog post. And that was my first experience with the Terminal. After installation, I could enable the wobbly effects and the desktop cube - which I showed to my friends with pride. But the greatest problem still remained: I couldn't play MP3 files, and there was only one OGG album in my



hard disk, which I was tired of listening to.

I went to an Internet café again, downloaded some deb files which said gstreamer plugins. I tried installing these on my desktop, but a message said that other files were needed for installation. When I got those files, more files were requested. I got tired of this dependency problem, and searched for another solution. I was pleased to find an ISO image with all the dependencies - it had been created by a user. I installed it via the command-line, and finally enjoyed the rest of my MP3 collection. In that ISO there was also a lot of software I hadn't heard of before. Most of the time, I was learning Blender from a wiki book called Noob to Pro. I liked GIMP, but it took me some time to get used to it, because it worked differently from Photoshop.

I've tried every version of Ubuntu since Breezy (5.10), and

almost all of the offline install methods. I've also tried Keryx for some time. Now that I'm studying at university I bought a laptop and installed Ubuntu 9.04 along with Windows 7. Software updates are not a problem now that I have access to the University's wireless connection. As I learned more about Ubuntu's software, my use of Windows declined. When Lucid Lynx (Ubuntu 10.04) hit the streets, I uninstalled Windows 7. Except for Microsoft Office 2007 (installed under Wine), I use only free software.

I always carry the Lucid ISO image and another ISO image created by Aptoncd, which has all the restricted extras packages and many more, in my USB drive. The Aptoncd ISO has 1GB of additional software. I am proud to say that I have installed Ubuntu into about 30 of my friends' machines with these ISO images, so that they could enjoy the spirit of Ubuntu.

# MY OPINION

Written by Robin Catling

# Macbuntu. Why?

As if it's not enough that Ubuntu is itself going for a Mac look-and-feel, I direct you to recent releases with Mac-like features which include:

- Icons
- Button Placement
- Light 'brushed aluminium' themes and purple wallpapers

But some people seem to need to go the whole hog and re-style their entire desktop as Mac-buntu.

OK, I get it that the Mac way of doing things in the user interface is widely admired (and much copied, pending lawsuits). But surely the reason you went open source is to avoid the closed and increasingly dictatorial corporate software crypto-fascist capitalist states? We'll skip over the cheap-skates who want to try to pass off their no-name PC clones as expensive Macs to their less knowledgeable friends. You know who you are.

But, when you have the highly functional Gnome desktop environment, the shiny KDE, and the lightweight Xfce and Openbox desktops, why would you want to transform your Linux into a wholesale Mac-clone? Any more than a Windows-7 clone? Even down to the Apple and Windows logos? And there are dozens of these 'transformation packs' around. That I don't get.

The current Linux distros have user interfaces with infinite customisations to be proud of: **show them off!**





# MORE UBUNTU!

Can't get enough Ubuntu?  
We've got a whole lot more!  
**DON'T MISS ANOTHER ISSUE!**



## TOTALLY LUCID

THE LYNX LEAPS  
What's new in Ubuntu 10.04?

HUGE SAVINGS OFF THE NEWSSTAND PRICE!  
SUBSCRIBE NOW!



TUNEUP FOR STARTUP  
Find out why Lucid boots faster

Getting around in Launchpad  
New ink: Exploring OpenOffice 3.2  
Create your own e-books



[WWW.UBUNTU-USER.COM/SUBSCRIBE-NOW](http://WWW.UBUNTU-USER.COM/SUBSCRIBE-NOW)





# REVIEW

Written by Art Schreckengost

# moonOS

**M**oonOS (moonOS when not starting a sentence) is an unsupported Ubuntu fork with the desktop redesigned for optimal use. Since non-free codecs and drivers are included, Ubuntu is not in the title due to Canonical restrictions.

The newest version can be found at [www.moonos.org/](http://www.moonos.org/), and is called Makara (version 3); it is

based upon Ubuntu version 9.04 (Jaunty Jackalope). This isn't negative at all, and could be a positive since Jackalope was essentially trouble-free when replaced by Ubuntu 10.04 (Lucid Lynx), which is still in the kink-removal stage.

According to the website, version 4 - based upon Ubuntu 10.04 Lucid Lynx - may be released as early as September, 2010, or

about the time you read this.

So, what's the big difference between this OS and any other on Canonical's unsupported list? After all, what makes moonOS stand out from the other 75+ variations that can be found on the derivatives page at [Ubuntu.com](http://Ubuntu.com)?

First, it's from Cambodia, and that's exotic to begin with. Visit the website and you'll see congratulatory nods to Phnom Penh (Cambodia's capital), and Beijing LUGs (Linux User Groups); however, it appears the main developer is Chanrithy Thim from Cambodia. The motto is *Enlightening Freedom*, an appropriate choice given the light nature of the OS.

Then, you have the desktop based upon *Enlightenment*, a lightweight version designed mainly for computers with limited hardware specs. It joins the crowd along with Xfce, Fluxbox, Xubuntu, LXDE, and a couple others.

Enlightenment, version E17, with the E16 found in Ubuntu repositories. They are vastly different, especially in base form. E17, as used in moonOS, is heavily modified, but the one offered to Ubuntu users is not. Install E16 and boot to it, and you'll soon discover it's a blank slate waiting for improvement.

And for you super-techs out there who plan to correct me, the actual abbreviation should be E.17 (notice the decimal point) - since it's version .17, but I'm dispensing with the superfluous dot at this point. Besides, the actual version number is 0.16.999.60, so you can see why I dispense with the occasional dot or two.

For those desiring it, LXDE is also offered as a download. You also have the option of 32- or 64-bit versions, but I always go with the former since the latter offers no distinct advantages I can see at this point, although that may change in the future.

Don't confuse this

I opted for 32-bit E17, since I





had never tested Enlightenment before, and LXDE is sort of like the ugly cousin you take to a dance because mom said so. She's there and you will dance, but you won't enjoy it. Sorry, just my opinion, but LXDE never thrilled me.

Either version required specs that are rather light - at a minimum: 300MHz processor, no less than 256MB RAM, and 4GB HDD space. Cell phones have more horsepower than this, so it's a safe bet that moonOS will run on your computer - unless your unit is still sporting a sticker stating "Designed for Windows 3.1".

Once booted from the Live-CD, which takes substantially less than a minute, you're greeted with swirling red patterns on a yellow and green background that will definitely waken the optical nerves, but it's never obnoxious. Look closer, and you'll see what you didn't at first glance - there is a radiating circle of light in the background representing the sun that highlights the leaves, branches and flowers in the foreground. It's a semi-abstract nature scene that grows on you over time and, if you're like me, you may notice something new the

more you look.

Intricate - without being overwhelming - and one of the few desktop designs I didn't immediately replace, but there is a hitch. If you like guessing games, then you'll like trying to find the cursor (it's nearly dead center), since it's the same color as the leaves and sometimes disappears into the background (a minor point).

E17, in base form, is as plain a desktop as you can get - short of a blank screen - because it's purposely stark until you tweak the settings, but moonOS goes the distance by making it presentable and enjoyable. Believe me when I say that installing E16 from the repositories will not give you the desktop above. Think storm-cloud gray as a background, and you'll got the base E16 desktop.

One point of merit to mention is that of the Live-CD boot time. I tried it about 5 times and the worst I saw was about 30 seconds from CD-drive spooling to a working desktop. That's downright impressive in any book, and is nearly the same booting speed when installed to the HDD (more



on that later).

If the desktop were the only positive value of moonOS, this review would be stopping here, but the OS also adds and subtracts in all the right areas.

First, stop looking for the traditional top and/or bottom panels - instead you get a series of docks and icons.

The top left gets icons and pictorial elements giving information on HDD space, home folders, desktop settings, etc. You can add information as you desire, and adding a flash card or USB drive will automatically put another notification or icon in that area (instead of the usual Ubuntu standard of slapping it in the next available slot on the desktop, sometimes where you least expect it). I had one observer compare this to Conky - but it's actually easier to use, and not so twitchy.

Notice the nice ejection symbol for drives, a welcome touch.

On the bottom, you'll see the OS X style dock, but, instead of program icons, you get desktop settings, volume control, date and time, etc. This is the usual system jazz you'll find in panels on base Ubuntu.

To the far left in this dock is the menu-activation button, an icon of a moon phase, technically a waxing crescent, along with a symbol - possibly a stylized E or T - although I'm not sure (enlighten me if you know - sorry for the pun). Although difficult to tell at first glance, even this icon has artistic work included, such as scrollwork on the moon phase, and even a pattern of stars in the background.

If you haven't figured it out yet, Mr. Thim is an artist who takes pride in his work.

The right side is occupied by top-to-bottom icons representing quick launches for programs like GIMP, OpenOffice Writer, Terminal, Pidgin, etc., along with a calendar and, for laptop users, a

battery level indicator. Much like at the bottom dock, a mouse-over will cause icons to maximize. Again, users have the option of adding and deleting as they see fit.

If you're wondering why GIMP and Pidgin are there - when Canonical removed them - keep in mind that moonOS is based on Ubuntu 9.04, not 10.04, but this does indicate that these programs may be gone when and if moonOS upgrades to 10.04 as a base. This is also why you won't see Ubuntu One - you're thinking of 10.04, not 9.04.

There's yet another trick up the sleeve here. Don't like clicking on the menu icon, or find yourself away from the bottom dock? No problem, just right- or left-click the desktop to pull up menus wherever you may be. Right clicking will get you the standard menu, while a left-click will show the desktop settings.

Now for the fun part. E17 not only has the standard menu listing programs, but you have an Enlightenment heading off the menu that opens about 20 settings you can configure. Without a

doubt this is the most comprehensive set of tweaks I've ever seen in one place since Ubuntu Tweak.

And tweak you probably will, but take my word of warning and click softly in this area. Much like playing mechanic on a Porsche without any experience, tweaking E17 can lead to bizarre results (I managed to increase icon and font size to the point my screen was nothing but a huge pixelated pigeon head from the Pidgin icon).

About the only hardware problem I encountered was a limited volume range, some of which I credit to a really lackluster netbook sound system, but it does appear you have to crank volume all the way up in sound settings to hear much. I had no problems playing music or videos with sound, it just wasn't audible at much more than a couple feet unless I installed earphones, when sound appeared to work as expected.

As for speed, I really didn't see any improvements with programs, just the desktop. Keep in mind that only the desktop has changed, not

the underlying code from Ubuntu 9.04.

This isn't a negative point, just a statement of fact. Jazz the desktop up or tone it down, the base code for the OS is still the same.

For those opting to permanently install moonOS, the installer hasn't changed at all. It's classic Ubuntu through and through. In short, 30 minutes to install, followed by another 30 minutes to download 250+MB of updates. Count on moonOS occupying about 3GB of your HDD.

Those using the Live-CD - without full installation - will experience CD-drive spooling while the disc searches for programs, but an easy way around this is to use UNetbootin and moonOS on a flash or thumb drive (first make sure you can boot from such a drive, though). This method eliminates the lag time.

After installation on my HDD, moonOS booted within 25 seconds - including the obligatory BIOS and POST checks enforced by the computer. This is about 5 seconds

quicker than my comparable Lucid Lynx installation with Gnome. Impressive, but what's more stellar is the fact that the Live-CD and full-installation boot times were about the same. That is really impressive, and I've never had that happen before.

Shut down times were on par with Ubuntu at about 5 seconds with the odd variation or two, but never over 10 seconds. Of course this was when moonOS was installed on the HDD. The Live-CD takes the usual half-minute or so while it cycles through the verbose mode, a trait unfortunately common to all Live variations.

If it's one thing I'd give E17 credit for over any other, it's the rock solid stability it provides. I never once had it lock up or fail to perform, nor did I have something disappear that I didn't make go away first.

Just one word of warning, though. You can add widgets to the desktop but don't get overzealous. By default, they go to the left panel, and it can fill quickly. Put too many there and the next one will be pushed off the

screen. This happened when I inserted a flash card. It caused the bottom icon to disappear as moonOS displayed the card information on the screen.

As for programs, you get the usual Ubuntu fare, plus some welcome additions such as Exaile music player and OpenOffice Database (a program often left out because of certain dependency issues). As always, Firefox is the lead (and only) browser offered - necessitating a download of Opera and Chrome (sorry, but Firefox gets a little too poky for me).

There is, however, a trio of major inclusions worthy of note. The first is moonAssistant, a program that pops up after initial installation to tweak hardware settings, if necessary. Considering that many distributions adopt the "love it or leave it" approach to hardware settings, it's nice to see that I have a say before the OS commits me to settings that may be wrong.

The second addition is moonControl, which looks like a diet version of Ubuntu Tweak. This program allows for changes to

appearance, network connections, hardware, and system specs. If you didn't get it quite right with moonAssistant, this one should help. A note to users thinking of installing Ubuntu Tweak because I mentioned it - don't. It's designed for Gnome, not E17, and most of the functions you expect won't be there.

The third entry of the trio is moonSoftware, best described as a modified version of Ubuntu's Software Center (or the old Add/Remove section). Although sporting a different design, it's intuitive, and can be mastered by anybody within a few seconds. It uses all available Ubuntu repositories, and then some, so you can add or delete sources as seen fit.

As a final test, I let several Windows and Mac computer users play with the system. Most figured out the desktop system within a few seconds by clicking here and there until they discovered the menu, and all recognized the OS X style docks. The biggest surprise for many was the dual menu system of using either the moon icon or the desktop.

Common comments included, "Unique desktop", "Easy to use", "Really nice looking", "Not difficult to master", and "Did somebody puke on your screen?" (the latter from a user not enthusiastic for the desktop design). Other than the last comment, nothing negative was heard - which is really unusual for any OS. Most just found it enjoyable to work with, especially the desktop which many found to be intelligently designed and well laid out.

In fact, the only minor gripe of note was one I mentioned earlier. Some users lost the mouse cursor on the desktop if they stopped over a leaf, but easily spotted it again by moving the mouse.

Using the 4 diamond system:  
**Ubuntu 9.04 base** -  $\diamond\diamond\diamond$  (always a good base to begin from, and it helps to pick an established, bug free, version instead of the newest that requires ironing)  
**Originality** -  $\diamond\diamond\diamond\frac{1}{2}$  (you've got to love that desktop design with icons and docks that are not only functional but properly positioned)  
**Overall User Experience** -  $\diamond\diamond\diamond\frac{1}{2}$  (lightweight desktop is functional while retaining an individual sense

of style and quirkiness)  
**Total Rating** --  $\diamond\diamond\diamond\frac{1}{2}$  (very good desktop operations, Ubuntu underneath it all and a good sense of style, form and function wrapped into one package)

In my opinion, moonOS is one of the better Ubuntu variations currently in Canonical's unsupported section. While others dwell on useless and sometimes confusing additions, moonOS does a great job of balancing design with function. I have yet to meet a user who hasn't had fun running it, and it's definitely a step up from other operating systems I've reviewed.

Given enough time and testing by potential users, I can see moonOS climbing up the distribution charts for Linux.

As a final note, if you go looking for other reviews, make sure you specify version 3, not 2. The latter version apparently had some teething problems, and was universally panned. Although I never tested 2, I've been told 3 is a much better proposition.



**K**ubuntu is a GNU/Linux distribution based on Ubuntu core base and KDE. Simply put, it is an Ubuntu with the KDE desktop environment. This means it has Ubuntu's awesomeness and KDE's bling and power. It is produced by the Kubuntu community along with Canonical Ltd. It is released every six months with Ubuntu. Let's see what Kubuntu offers its users.

## Desktop

The 4th revision of KDE (K Desktop Environment) adopted a new approach to desktop interaction called Plasma Desktop. Plasma desktop is meant to provide users with super-cool looks and feel, flexibility, and ease of use, with hiding of technical stuff beneath the desktop surface. Unlike Ubuntu desktop, Kubuntu/KDE desktop has only one start menu, called Application Launcher. Application Launcher features different tabs for accessing computer applications and locations. It also has a search

field where users can type in an application name/function to search for it. Application Launcher is nice, but you can change it to a more traditional start-menu if you don't like it. Users can also download and use Lancelot Application Launcher - a feature-rich launcher. Plasma desktop has lot of widgets available for use called plasmoids, and more can be downloaded easily from the 'Add widgets' interface. When you install Kubuntu, you will see a Folderview plasmoid and a Social Desktop plasmoid on your desktop. Of course, you can add/remove plasmoids to your liking. The plasma bling also allows users to have an image slideshow or an interactive globe (marble) as a desktop background. Some additional packages need to be installed from official repositories for these additional wallpaper features.

The default Air theme and the Oxygen icon set adds to the desktop beauty. Users can download more wallpapers and themes using the Get Hot New

Stuff functionality provided in various configuration utilities wherever such contents are available for user consumption.

Now, let's see what applications are offered by Kubuntu.

## Applications

**Dolphin** is the file manager in Kubuntu. It comes with a great amount of features and functionality. Users can select from different view modes such as Icon/Details/Columns. Image previews can be enabled/disabled easily using the toolbar. Searching and Sorting is also available. The left side is occupied by the Places panel, and the right side by the Information panel. The Places panel allows easy and quick navigation in the file-system, and the Information panel allows space for a preview and display of some basic information about selected content. You can also have a terminal inside the file manager. Just press F4 and a terminal will appear at the bottom part of the

file manager window.

The default browser in Kubuntu 10.10 is rekonq. rekonq has replaced konqueror as the default browser. rekonq features a slick user interface similar to that of Chromium/Chrome, and is a native KDE application with tight integration in Kubuntu desktop. It does not have a feature-set matching other browsers like Firefox or Opera, but still it has enough features needed by a regular user. rekonq has a great potential to be one of the best browsers available in coming years. Firefox lovers can install it using a one-click Firefox Installer available in the Internet section of the application menus.

**KMail** is the e-mail client application in Kubuntu. Users can configure and use their email accounts for POP/IMAP access. It makes sending and receiving emails easy.

Users looking for a download manager can install **KGet** and use it. It supports basic downloading



operations such as pause/resume, and displays the download queue in a nice informative layout. You can use KGet's plasmoid on your desktop to see download progress, and can also have KGet drop the target box available on the desktop for easy drag and drop of new downloads.

**KTorrent** is a feature-rich torrent client, and has almost every feature a user can ask for. It also supports magnet links for downloading.

Almost everyone chats with their friends, so a chat client is a basic need for every user. Kubuntu comes with the **Kopete** chat client. Similar to Ubuntu applications Empathy and Pidgin, it also supports multiple protocols like jabber, yahoo, gtalk, msn, etc. So users can have all their chat accounts configured in a single application. Kopete also supports Facebook chat with a plugin. Video chat support is also built-in to Kopete.

Kubuntu also comes with **Quasell** IRC chat client for IRC users.

These days a blog is not

exclusive to developers, and normal users also have their own blogs. **Blogilo** is a blog client available in Kubuntu. Simply give your blog address, user-name, and password to Blogilo, and then click on auto-configure. Blogilo does the rest of the work to configure your blog account. It supports most popular blog hosting platforms. It's very easy to use Blogilo. Try it out.

**Amarok**, a music player, which probably doesn't need any introduction in the Linux world, is the default music player in Kubuntu. Amarok sports plenty of features like music library management, song tags and ratings, album cover fetching, lyrics, artist information from Wikipedia, YouTube videos, Auto-generated playlists, online music services, and many more. As the Amarok developers say, Rediscover your music with Amarok!!

**Dragon Player** is the default video player in Kubuntu. It's a very

simple video player from KDE land. All it does is play videos. Its simple layout may attract new users; however, anybody looking for more features can also install the versatile **VLC** player or **Kaffeine** from the official repositories.



**Gwenview** is the default image viewer in Kubuntu, and it's not a gtk/gnome application. Though the name may suggest otherwise, it's a native KDE application. It is a very feature-rich image viewer supporting many image formats. It also allows basic image manipulation operations like image resize, crop, rotating image, and red-eye reduction. Image tagging is also supported. After installing additional Gwenview plug-ins, you can directly upload to many of the image hosting sites such as Flickr.

**K3b** is a very good application for CD/DVD burning. With K3b, you can burn data discs, audio discs, video discs, emovix discs, and CD images. You can also copy discs, format re-writable discs, and

rip the discs with K3b. It has a very easy-to-use layout - with drag and drop functionality.

## Office Applications

Kubuntu comes with the same **OpenOffice.org** suite as Ubuntu. It's excellent for creating and working on documents, spreadsheets, presentations, and drawings. **KOffice** is another office suite which can be downloaded and installed.

**Okular** is a universal document viewer for Kubuntu. Among many others, it can open popular PDF and Microsoft formatted XPS documents.

**Contact** is the PIM suite in Kubuntu. Contact includes Kmail (the email client application), Contacts for address-book, a Calendar, a To-Do list application, a Journal application, Pop-up notes, a Time-tracker application, and Akregator (a feed reader). A nice summary view adds some extra value, and gives a quick glance at new emails, upcoming events and special dates, pop-up notes, etc.

## Games

Kubuntu does not have any games installed by default. However, users can download and install great games very easily. It has a large collection of games available in official repositories. Just install the *kdegames* package, and it will pull all the fun-packed KDE games for you.

## Software Management

In our Ubuntu/Kubuntu world, we enjoy the luxury of simple application installation and removal, thanks to centralized package management. Plenty of programs are available to download and install from the official repositories, and this can be done very easily by using a package manager like Ubuntu Software Center or KPackagekit.

**KPackagekit** is a software/package management tool for Kubuntu. You can easily search for and install new applications, or remove software that's no longer required. You can also see the install history in KPackagekit. KPackagekit can also update the installed software

automatically - subject to the user's permission.

## Desktop Effects

Kubuntu's default window manager, **Kwin**, provides many good desktop effects which make up a part of the bling. Desktop Cube, Present Windows, Cover switch and other application switching effects, minimize and maximize animations, Taskbar thumbnails, and Desktop Grid are well-known effects. However, these effects are enabled only if you have a 3D-graphics-compatible graphics card.

## System Control

In Ubuntu there is a system menu for controlling system behavior and configuring user preferences. This system menu has separate entries for each configuration task. In Kubuntu there is a centralized System Settings module for managing the system. Conceptually, it is similar to the Control-Panel in Microsoft Windows systems. Everything about your system can be configured through the System Settings module.

## Netbook Interface

This interface is now available within a single release containing the Kubuntu Desktop and the Kubuntu Netbook interfaces. Up to Kubuntu 10.04, these interfaces were released as different versions. The Netbook interface focuses on optimum use of the vertical space available on a netbook screen. If you own a netbook, you should try it.

## Final Words

Kubuntu, along with KDE, is getting better and better with every release. Every release brings new features, major updates, and added stability to it. The integration of different parts of the distribution has improved a lot in the latest release. In my opinion, Kubuntu 10.10, Maverick Meerkat, is an excellent release, and it's really the best KDE distribution out there. Kudos to KDE and Kubuntu developers

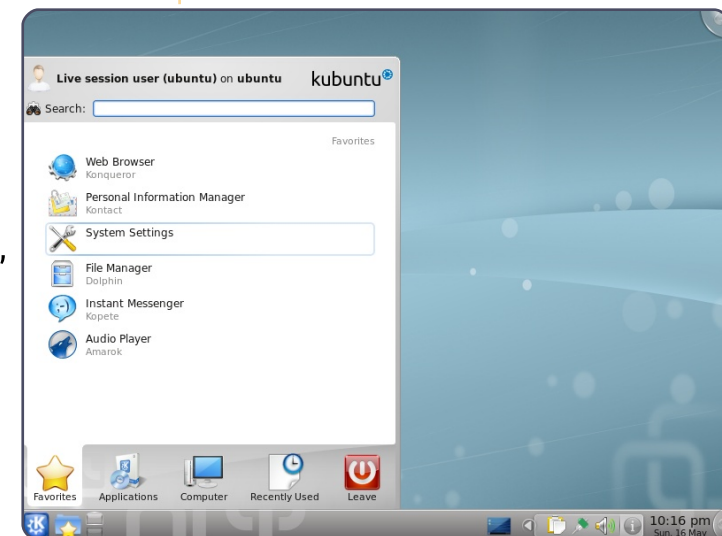
and their respective communities!!

If you want to try out the new Kubuntu 10.10, then, as with Ubuntu, first try the live CD or live USB disk, and make sure that your hardware works well. Once assured of hardware compatibility, you can confidently install the operating system.

## More information

You can get more information about Kubuntu and KDE on their respective websites.

**Kubuntu** – [www.kubuntu.org](http://www.kubuntu.org)  
**KDE** – [www.kde.org](http://www.kde.org)  
**Qt** - <http://qt.nokia.com/>





# TRANSLATION INTERVIEW

Supplied by Amber Graner



**André Gondim**  
Brazilian Portuguese Translators

Ubuntu is brought to users in their own language by a large community of volunteer translators, who tirelessly work on localizing every part of the operating system on every release. In this series of interviews we'll get to know who they are, about their language, and how they work.



## Could you tell us a bit about you and the language you help translate Ubuntu into?

My name is André Gondim, and I am 28 years old. My language is derived from Portugal's Portuguese, but of course we have our peculiarities.

## How and when did you become an Ubuntu translator?

I started with Ubuntu in about 2005. I met Og Maciel and he told me how I could help with Ubuntu even if I wasn't a programmer: localization was a good way to start. Since then I help with translations, but started regularly in about 2007. That time I started working hard in translations and entered in the top translations' contributors (<https://launchpad.net/ubuntu/+topcontributors>). In 2009 I became a translator coordinator in Brazil.

## What other projects do you help with inside the community?

When I have time, I try to translate

some packages directly in GNOME.

## Do you belong to an Ubuntu LoCo team? If so, which one?

I am a member of the Brazilian Council and I belong to a sub-LoCo, the Rio Grande do Sul state in Brazil, whenever I can, I try to organize events here and motivate our other Sub-LoCo teams to organize release parties, Software Freedom Days, FLISOLs, and other events like install fests.

## How can people who want to help with translating Ubuntu and all the various pieces and parts into your language get started?

Well, if someone wants to help may read the wiki: <http://wiki.ubuntu-br.org/TimeDeTraducao/>, or visit the Launchpad Brazilian Translators' team in Launchpad: <https://launchpad.net/~lp-l10n-pt-br/>.

## What's the desktop experience for Ubuntu users in your language? Is Ubuntu in your

## language popular among native speakers?

We're always very careful to review all translations to pt\_BR, so the error rate is very low. This, I believe, contributes greatly to having an Ubuntu very well translated to our mother tongue. As the Hungarian translators' coordinator mentioned (<http://fridge.ubuntu-fearw.com/node/2137>), I guess we could say here too: "Ubuntu speaks Brazilian Portuguese very well." If I am not wrong, Ubuntu is the most used Linux distribution in Brazil and I daresay that a huge part of these users are using it in our language. The users I see aren't using it in pt\_BR are developers and such.

## Where does your team need help?

Help is always welcome, in every field. We are always inviting people to help because there are plenty to be translated and reviewed every release. If one wants to help, documentation and translation itself are two good ways to do that.



## Do you know of any projects or organizations where Ubuntu is used in your language?

I know Ubuntu is used in some colleges, also in some "tele-centros" (places where you can use the computer for free to surf on the Internet, to write documents and other stuff).

## What do you feel is the most rewarding part of translating Ubuntu?

When someone tells me "if Ubuntu was available only in English, I wouldn't be able to use it." I feel really rewarded.

## Is there anything else about your team or translation efforts that you would like to talk about?

I would like to thank all the translation teams for all the work done, especially this cycle. This cycle we'll release Ubuntu with less than 10% remaining to translate. Our goal is to reach 0%, of course, but every cycle we're getting better and better at doing this. That's why I am so proud of my team.



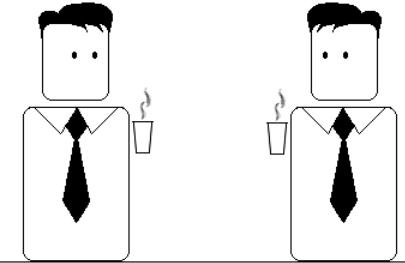
## Become an Ubuntu Translator

Do you speak languages? Join our translation community, and make Ubuntu accessible to everyone in their own language. You can:

Get in touch with a translation team (<https://translations.launchpad.net/+groups/ubuntu-translators>) or create your own <https://wiki.ubuntu.com/Translations/KnowledgeBase/StartingTeam>

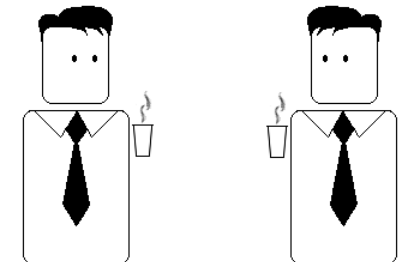
Help translating this language - <https://translations.launchpad.net/ubuntu>

So he got a life sentence?  
For how many?

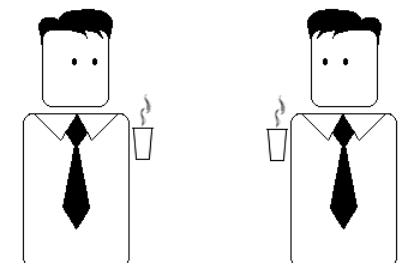


Twenty-five.

Twenty-five people?



No, twenty-five songs.



by Richard Redei



## Pinyin Input

**O**ne of the contributors to issue 41 "Desktop" was bemoaning the lack of Pinyin input. He's probably figured it out by now, but if not, the answer is at: <http://maketechasier.com/enable-foreign-language-input-in-ubuntu>

I can't test this; my wife doesn't know Pinyin, she uses a stylus on a writing pad, and character-recognition software. Sadly, Windows-based software.

**Gord Campbell**

## Even Less CLI

**I** totally agree with James' letter (Less CLI, more GUI) in FCM41 where he says that the command line puts people off Linux. This has also been my experience. I've ran Ubuntu for five years now and would never go back to Windows, but even I don't like using the command line and avoid it wherever possible. Unfortunately, Linux in general

still has a reputation as a geek's operating system, something which the use of the command line doesn't help to dispel. Ubuntu has made great strides since I started using 6.06 (I'm now on 10.04) and this needs to continue if more people are to discover just what a fantastic OS it is.

Ordinary people are not technical, they want things to "just work" without having to type obscure commands into a box. By all means, keep the ability to do things via the CLI for those who prefer to do things that way, but just provide a GUI alternative for those of us who don't. Like James, I believe that Ubuntu will not progress into the mainstream unless everything can be done via simple GUI.

**Chris Burmajster**

## PlayOnLinux

**I** was surprised to see you omit one extremely useful and important application for Wine (re: FCM41 - Top5),

especially useful for the less technically-inclined (such as me).

**PlayOnLinux** has knowledge of a number of various Windows games and other applications and helps you to install them. For example, if you need .Net, PlayOnLinux performs the entire installation for you, even including the download.

I have no clue how to use Wine -- it's way too complicated for me -- but I easily install Windows programs using PlayOnLinux. Of course, being a front-end and not a replacement for Wine, its success rate is only as good as Wine, but for my limited purposes, it's perfect.

PlayOnLinux does have one bizarre quirk that a newbie will find confusing. It doesn't appear on your menu until you tell it to. After installing it, press Alt-F2 and enter playonlinux. Answer any setup questions. Then choose Settings > Environment > Add PlayOnLinux menu in your panel -> Apply. Close PlayOnLinux, restart

it (with Alt-F2), close it again, and finally it will be in your menu.

PlayOnLinux is available in the normal Ubuntu repositories, or see its website [playonlinux.com](http://playonlinux.com).

**Paddy Landau**

## Third Hand!

**I** wrote in Full Circle #30 about the 'reincarnation' of a laptop of a pensioner friend of mine. This particular laptop was eventually replaced by a new purchase of an Ubuntu only laptop from a specialist UK vendor. However, the then discarded machine was passed to me, and now with Ubuntu 10.04 installed, it is being used by a small local charity I help. They use it for normal laptop things but in particular for presentations to their sponsors and peer groups. Viva Ubuntu! Viva laptop!

**Alan Cocks**

## Business Environment

**R**egarding the writer who asked for his perfect business environment, here goes:

For file server: Samba, if all PCs are Linux- NFS server. Export some folders to clients (config is /etc/exports ) then mount shares in clients (/etc/fstab)

For internet point of entry - create an HTML page on a read-only share of the server with a bunch of links to useful online resources and point all browsers' homepage to this file. The other option is to install Apache web server

For faxing: Hylafax with Avantfax as a nice web based frontend.

Webmail: squirellmail or alfamail as web clients.

For accounting: try WebERP.

Invoicing: SimpleInvoices.

They could also install a wiki: MediaWiki , dokuwiki.

Also, have also a look at:

SugarCRM and VtigerCRM

And some helpful links:

How To Set Up A Webgui Based Print Server On Ubuntu Server Using SWAT, CUPS, And SAMBA: <http://www.howtoforge.com/how-to-set-up-a-webgui-based-print-server-on-ubuntu-server-using-swat-cups-and-samba>

Set Up Ubuntu-Server 6.06 LTS As A Firewall/Gateway For Your Small Business Environment: [http://www.howtoforge.com/ubuntu6.06\\_firewall\\_gateway](http://www.howtoforge.com/ubuntu6.06_firewall_gateway)

Ubuntu 10.04 Samba Standalone Server With tdbsam Backend <http://www.howtoforge.com/ubuntu-10.04-samba-standalone-server-with-tdbsam-backend>

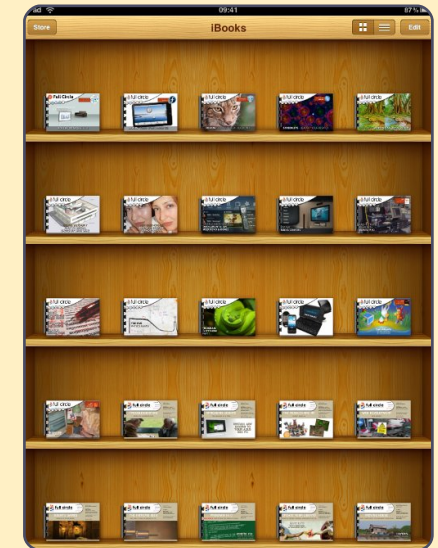
Build A HylaFax Server With AvantFax Frontend Using Debian Etch <http://www.howtoforge.com/build-a-hylafax-server-with-avantfax-on-debian-etch>

**Kostadin Zgourovski**

## The Cheek!

One Mr. Knightwise has had the cheek to send us a photo of our beloved FCM on his iPad! If you would like to direct some (friendly!) abuse in his direction you can find him at: <http://knightwise.com>. He's actually an all round nice chap with an excellent podcast, so I forgive him. This time.

**Ronnie**



*This morning in the nuclear power plant  
20 km upwind from your home.....*

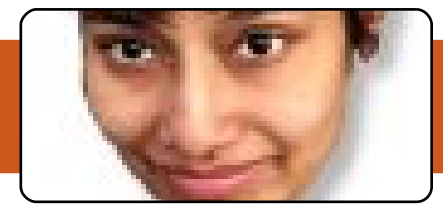


*Modern Times*



# UBUNTU WOMEN

Written by Penelope Stowe



**Penelope Stowe: Please tell us about yourself.**

**Vid Ayer:** I am Vid Ayer (nickname, 'Svaksha'), founder of Ubuntu-Women, volunteer in various capacities across a spectrum of FLOSS communities, a pythonista who participated in Google Summer of Code under the guidance of the "Systers" project. That said, I strongly believe that one does not need to have an engineering degree or a Ph.D. in Computer Science to volunteer in the FLOSS community. Besides software code, contributions could take the form of Linux advocacy, technical support on lists/irc/forums, packaging upstream software, or bug squashing, maintaining project websites/wikis, filing bugs, creating artwork, etc. All of this can be done from the convenience of your home with a PC and Internet connection. So, it's all about utilising your skill to enhance the Libre software community, where knowledge is distributed and shared peer-to-peer, amongst all those who

participate (or don't). It's the helping, sharing spirit that matters more.

<http://svaksha.com/pages/svaksha> contains some information about the various Libre communities I am involved with.

**PS: How did you get involved in Ubuntu and Open Source?**

VA: Before Ubuntu, I was with Linuxchix where I helped out with their job-posts and newchix mailing lists, and I was dual-booting Windows with Fedora Core1, which I got with difficulty (I was told "Linux is for engineers who write Linux code"). Before this, I had read about GNU, and found the philosophy inspiring enough to cheekily ask if I could volunteer without using Linux at all.

While vacillating between Fedora and Ubuntu, I wrote a locale for the Sanskrit language which Christian Perrier kindly sponsored into Debian. Later, a friend recommended Gentoo, but soon handed me an Ubuntu CD after he

experienced the pathetic internet bandwidth and frequent power outages in India. Ubuntu was my cue to give up dual-booting, and I lurked a few months in the fledgling Ubuntu community because it was hard to believe that people in a Linux community could really be polite and helpful.

Ubuntu's "shipit" program also changed the metrics of user contributions -- people living in countries with infrastructure issues (poor bandwidth, power outages, etc.) don't have to depend on a local LUG member (or a Linux magazine giving away CDs) for their share of the GNU/Linux goodness. Not only was I able to get the latest Ubuntu releases, but it was far easier to recommend Ubuntu to friends who had heard about Linux, yet were unsure if this was just for nerds. That I could share Ubuntu so easily was even more awesome.

**PS: What Ubuntu projects are you involved with?**

VA: In early 2006, I founded

Ubuntu-Women, managed, designed, created, wrote, and implemented the contents for the initial static HTML and wiki pages for the UW website. Around the same time, I also co-founded Ubuntu-IN (left pretty soon), was involved with the Ubuntu bug-squashing team, and became an editor at Ubuntu-Fridge (but I'm not as active as I would like to be, sadly). Thanks to an old rule on the Fridge team, I became an Ubuntu-Member (2006-08) but didn't renew the membership when it expired -- my rationale being I can contribute sans status symbols like an "@Ubuntu" email id.

**PS: You've been around since the early days of the Ubuntu-Women project. What do you think of how the project is doing now? What would you like to see happen in the future?**

VA: The Ubuntu-Women project has grown over the years, and I'd give credit to all the people who participated, engaged with us, and supported us over the years. For any community project,



participation is the key and it's wonderful to read some of the "introduction" mails that hit the list. Until 2010, we never had a formal leadership, and recently it has moved towards an open election process.

Regarding project goals, Ubuntu-Women had started off with a "mentoring" program where anyone interested could mentor or request mentoring in the tech sphere that interests them. This is one program that I would love to see grow and continue into the future. Maybe the "tres-leaders" will play a larger role in taking the mentoring program forward with their vision and input from the team.

Since our goal has always been to welcome any contribution from women, the mailing list often gets mails from women listing their programming/tech skills, and we usually re-direct them to specific communities within Ubuntu. Currently, we don't have a formal quantitative method to track whether women stay and contribute, whether they leave because they don't find the information they are looking for, or whether they are intimidated

by the sheer size and vast technical scope of Ubuntu? These unanswered questions have bothered me.

Given that existing members are volunteers themselves, and usually have their own responsibilities, it's hard to keep track of those numbers, and, hence, I've been wondering how we could narrow the scope and definition on the technical areas where UW can collaborate with other Ubuntu teams needing help. For example, most times newbies may get confused if one points them to Launchpad and asks them to search/squash bugs. Suppose a woman lists "C/C++ and networking" or "Python and AI" as her skill sets; how could we scoop information from Launchpad and use it to channel women to specific bugs that need squashing? Could we use an API for data-mining Launchpad for possible areas of interest and list these on our wiki pages, or post mails to the mailing list, or push them into an RSS/Atom news feed on the Ubuntu-Women planet so that interested folks can subscribe to the news feed? These are just ideas which need more discussion on our mailing list/forums.

Secondly, another important aspect would be to increase collaboration with Debian-Women and other \*-women's groups. Recently, Ubuntu-Women members from Italy met with Debian-Women members to exchange notes. Since Ubuntu draws heavily from Debian, such interactions would help in brainstorming and exchanging ideas between upstream/downstream communities. Of course, these real-life meet-ups are not easy for those women who are not located within Europe or America, which is where UDS is mostly held. That is where Canonical/Ubuntu could move UDS around the world -- at the very least one UDS per year in a developing country. Alternatively, increase sponsorship assistance for women contributors within the FLOSS community.

### PS: What open-source projects are you involved in outside Ubuntu?

VA:  
1. Wrote a Sanskrit (SA) language locale for Debian via the Debian-Women project.  
2. Participated in Gsoc-2010 with

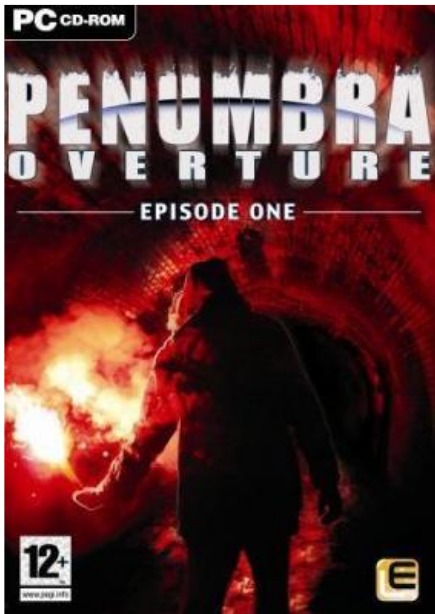
Systems, a USA registered non-profit organisation with technical women members from all over the world.

3. Member and admin the Newchix and Indichix mailing lists; was the admin for the Job-posts list from 2005Jan-2010May.
4. A pythonista currently trying to emulate the python-django concept locally, admin the diversity mailing list, bug-squashed for us.pycon, helped test the in.pycon.org website (2009), etc.
5. Was a list admin for the KDE-Women mailing list (2007Mar to 2010May).
6. Member of the Openwebfoundation.org

### PS: Do you have any non-technical interests you'd like to share with us?

VA: Hmm... lots, actually, so I'll trim it down to random keywords: Vipassana, Chess, Doodling, Crochet, Dark chocolate, Indian classical (carnatic and hindustani) music, Sanskrit, and AI.





**T**his month, I will be concluding my reviews of the selection of games featured in the Humble Indie Bundle with **Penumbra: Overture**.

Penumbra is a very unusual game series, developed by Swedish developer Frictional Games. It is a first-person horror game, heavily focused on puzzle solving. Right from the start, I am going to point out the only major issue with this game. One of its most difficult concepts to

overcome is that it is not a shooter even though it feels like one. You have no gun for defending yourself, but you should. Greenland, where this game is based, is very dangerous. All you can do is run and hide, and wait for the hostile animals to go past. Before you consider even trying the Penumbra series, make sure you're happy playing a first-person game without a gun.

Penumbra: Overture is the first title in the Penumbra trilogy. The story follows a thirty-year-old physicist, called Philip. The story begins after his mother dies when he receives a mysterious letter from his dead father. The letter leads him to Greenland. The story is excellent - one of the best on Linux - and it's told many different ways, such as cut-scenes, and extracts from diaries and letters found throughout the game.

The gameplay is very unusual. It feels odd, as I mentioned earlier, but if you can get past it, it is a satisfying game to play, with its emphasis on puzzles and

adventure perfectly suiting a horror title. The enemies you encounter in the game have excellent AI, with the ability to respond to light and noise, which means you will have to be careful sneaking past them. The puzzles can be tough, but are rewarding.

Graphically, Penumbra is stunning. It is one of the best-looking games. It has particularly great lighting effects, which add to the cold, wintry feel of Greenland. Its sounds are also impressive, from dogs creeping up on you to the gale force wind blowing past your ear. While requiring a good computer to get the most of this game, it is fairly scalable to lower-end hardware.

Penumbra is for a certain audience of gamers. It feels too much like a first-person shooter for me, and too often I have wished I had a gun. I feel too vulnerable all the time, running and hiding too often from spiders and earthworms, although this does add to the horror factor. If you prefer story and stealth games,

this one is for you. It will be one of best-looking games you will play on Linux, and it has one of the best stories.

**Score: 6/10**

**Good:**

- Excellent story
- Finding letters and diaries
- Good Atmosphere

**Bad:**

- No Guns!
- Feeling Vulnerable all the time



**Ed Hewitt**, aka chewit (when playing games), is a keen PC gamer and sometimes enjoys console gaming. He is also on the development team for the Gfire project (Xfire Plugin for Pidgin)



# Q&A

Written by Gord Campbell

If you have Ubuntu-related questions, email them to: [questions@fullcirclemagazine.org](mailto:questions@fullcirclemagazine.org), and Gord will answer them in a future issue. Please include as much information as you can about your problem.

**Q** I've installed a VLC Remote App to my Blackberry which can control my VLC player from any computer over my wireless network. However, I'm having trouble figuring out how to edit a certain file it's telling me to edit. The file is:

```
/usr/share/vlc/http/.hosts
```

**A** Open Accessories/Terminal and enter this command:

```
gksudo gedit /usr/share/vlc/http/.hosts
```

All this is a result of Linux file ownership and permissions, which are for your own well-being, and stop you doing things to system files without root permission. Using sudo in front of a command gives you root permissions as long as you (i.e., your username) are a member of the admin group.

**Q** I installed secure delete, but, when I tried to run smem, it said that smem must be installed. Is SMEEM different in 10.04?

**A** The command smem in secure-delete has been changed to sdmem. To run the secure memory wipe, execute:

```
sudo sdmem
```

For help and options, use:

```
sudo sdmem -h
```

**Q** I want to backup my data from my unbootable hard drive using a LiveCD, but it says the folders are locked.

**A** From the LiveCD, open Accessories/Terminal. Enter the command gksudo nautilus, which will give you a "root" file browser. It's looking at the files on the CD,

whereas you should be accessing the files on the hard drive. Click on the up-arrow in the toolbar, and double-click on the /media folder. It should show you the mountpoint for your hard drive; double-click on it. Now you can double-click on /home and go from there to wherever your data is stored.

**Q** I mounted a USB flash drive which contained the U3 autoinstaller for Windows. Since then I can't write to USB flash drives or SD cards.

**A** Run Synaptic, and completely remove "usbmount." Make sure "pmount" is installed.

**Q** I download the driver for my ATI 9550 video card and try to install it in Ubuntu 10.04, but it gives an error.

**A** There are no downloadable drivers that will work with your card and current versions of Ubuntu. What used to be ATI dropped fglrx driver support for your card a long time ago.

The only working drivers available now are the open-source drivers -- and they are automatically installed with Ubuntu.

**Q** I want to try Ubuntu, but the only version which would install was the server edition. Then I could install the desktop from the command line. However, my USB ports don't work. HP says my motherboard is an AmberineM-GL6E, other programs identify it as an Asus A8AE-LE

**A** After updating the BIOS, everything worked fine.



**Q** How can I get image previews for Canon's RAW format (.cr2) files?

**A** Install Gnome-raw-thumbnailer, and restart Nautilus.

**Q** I recently tried to plug my laptop to a TV and adjusted the settings consequently. Now I want to use it with the laptop screen, but the settings are messed up.

**A** Boot into safe mode. Then run:

```
sudo dpkg-reconfigure
xserver-xorg
```

This will guide you through keyboard, mouse, and display settings. When done, reboot by pressing ctrl+alt+del.

**Q** I downloaded Amarok, and I am having issues with it loading and seeing my Sansa Fuze MP3 player.

**A** Try setting your Fuze to MSC mode by going to: Settings -> System Settings -> USB Mode and set it to MSC.

**Q** I have a Sansa e260 (4GB). When I rip MP3s for it on my Windows machine, everything works fine. When I rip them on my Ubuntu machine, the Sansa can't figure out the artist, album, or even the song title. I have tried ripping with both Banshee and Sound Juicer. For what it's worth, I can make a disk with these MP3s, and my 2008 Honda's CD player understands them just fine.

**A** Install Rockbox on the Sansa. This also means it will be able to play OGG or FLAC files.

**Q** I've got a laptop and a netbook, both with Ubuntu 10.04. If I compile software on one box, how do I copy it to the other?

**A** When you do "sudo make install" in the compiling process, change that to "sudo checkinstall" and it will build a .deb. Copy the deb to the other computer and install it.

**Q** I just installed the latest version of Ubuntu on my wife's computer. I got everything running and all is good. To keep her happy, is there a way that I can set Windows as the default rather than Ubuntu?

**A** Install Startup manager. It will be under System > Administration > Startup Manager, select the default OS from there.

**Q** I upgraded my Ubuntu 9.10 to Ubuntu 10.04 LTS and get no sound.

**A** This is a common problem, for some people, deleting the .pulse folder in the home folder helps. For others, they run System > Preferences > Sound, and discover that output volume is muted. And others need to run System > Preferences > Sound, click the Output tab, and make sure "Analog Output" is the "connector."

**Q** When I try to play games like Supertux 2, it flickers a lot. My video card is an ATI Technologies Inc RS690M [Radeon X1200 Series].

**A** Assuming your computer has Grub2, open a terminal, and enter:

```
gksudo gedit
/etc/default/grub
```

```
add nomodeset to
GRUB_CMDLINE_LINUX
```

save the file and exit, then:

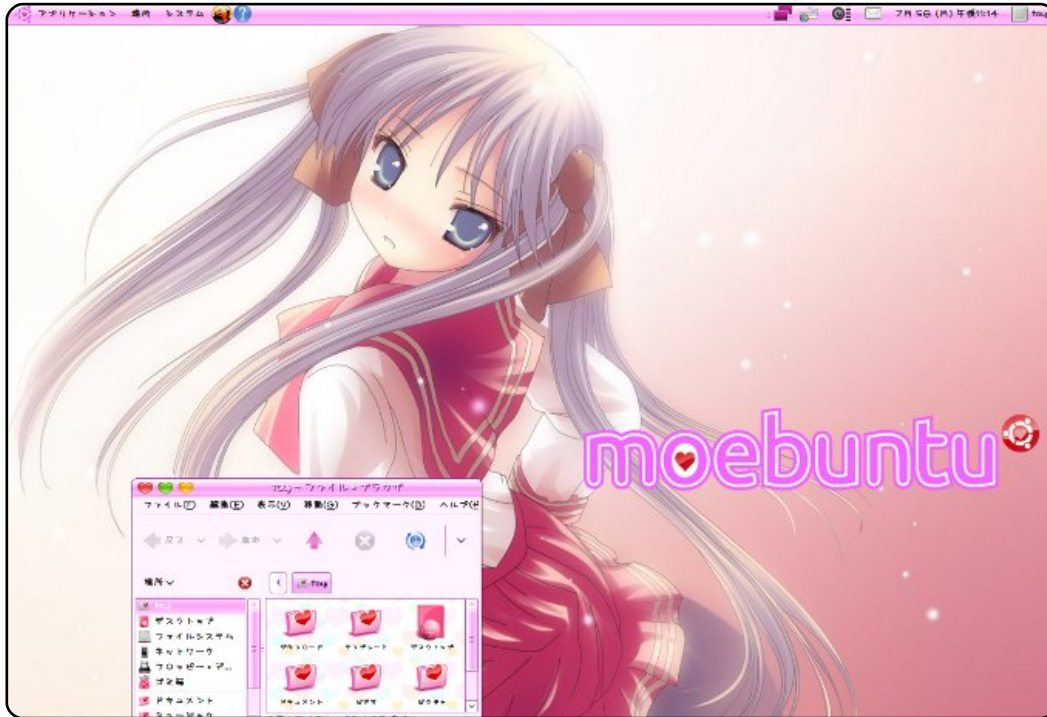
```
sudo update-grub
```

Reboot, and it should work fine.



# MY DESKTOP

Your chance to show the world your desktop or PC. Email your screenshots and photos to: [misc@fullcirclemagazine.org](mailto:misc@fullcirclemagazine.org) and include a brief paragraph about your desktop, your PC's specs and any other interesting tidbits about your setup.



I am running a website named "moebuntu" (Moe + Ubuntu) which introduces Japanese "Moe" culture into the world of Ubuntu: [http://moebuntu.web.fc2.com/home\\_eng.html](http://moebuntu.web.fc2.com/home_eng.html). The site shows how to dress up your Ubuntu Desktop (and more) with Moe style. I am making efforts with this site to familiarize the world with Ubuntu in Japan. Here are the customization examples of my Desktop and Plymouth.

My PC specs:

- CPU: AMD Athlon(tm) 64 X2 Dual Core Processor 4800+
- RAM: 2GB
- HDD: 1TB

TOY

In the center of the desktop, I use screenlets: Calendar, Clock, Now Playing, Output, and Sysmonitor. Every screenlet is set in low opacity - except Clock - so the image is not hidden by screenlets. In the top panel, I put some links to applications that I use a lot and the bottom panel is transparent and automatically hidden to open windows only.

My laptop specifications are:

- Ubuntu 10.04 - Lucid Lynx
- Lenovo ThinkPad R61i
- Intel Core 2 Duo CPU T5550 @ 1.83 GHZ
- RAM 1.5 GB

Dadan Ramdhan



I've been using Linux for about six months. My first distro was Linux Mint. The idea of free software just sunk into my soul, but I did not understand Mint for a long time. Then I installed Ubuntu. This OS pleased me very much, and I enjoyed its standard theme design for a long time, until now. I customize the look of my desktop for my taste. To begin, I love playing World of Warcraft, but in recent times, due to school, work and other reasons, I do not play it so often. But the game is reflected on my desktop. Look at the wallpaper, and, if you played WoW, you will see the class and race of my character. I'm using Conky, AWN, icons from the theme "Awoken", and Metacity "Borderless Elegant Brit". All this I found on the website [gnome-look.org](http://gnome-look.org).

**Peter Shurgalin**



I'm using Ubuntu Lucid Lynx i686. The theme is Elegant Gnome Pack, but there are some modifications: the font is Swatch it, and the panel is transparent. I downloaded Conky from [Gnome-look.org](http://Gnome-look.org), and edited it a little bit: changed colors, removed some items, and added some items. The theme for AWN is Transparent White.

Laptop specs:

Acer eMachines E725 15.6"

Intel Pentium Dual Core T4300 2.1 GHz

2 GB RAM DDR2

Intel GMA 4500 MHD Graphics Card

Hitachi HDD 250 GB

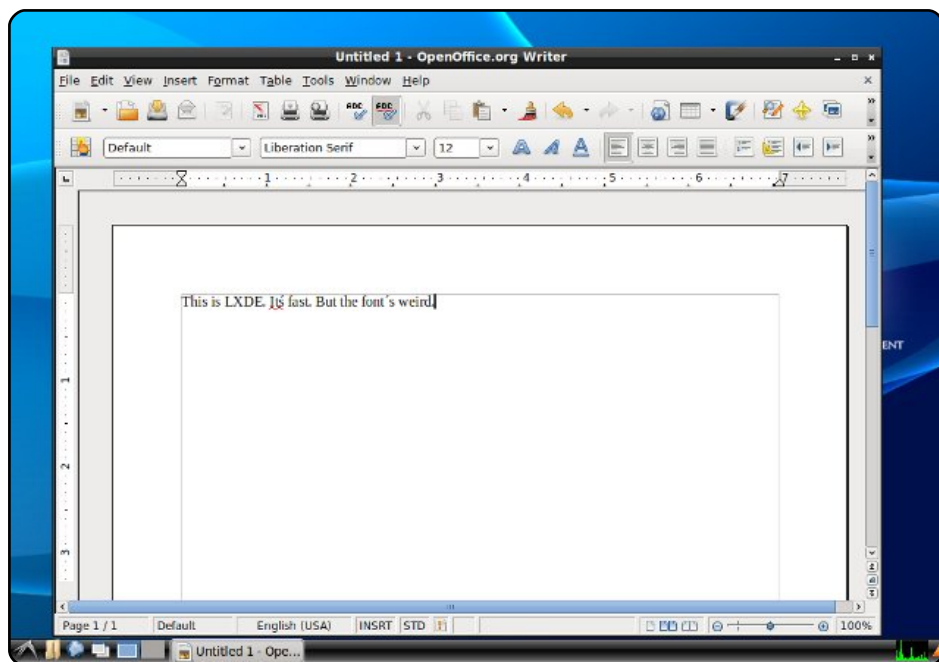
**Mario**



## LXDE

If you want a speedy desktop environment, check out the Lightweight X11 Desktop Environment, or LXDE. There's a reason it's the default desktop environment for both UbuntuLite and Lubuntu, both incredibly fast spin-offs of the main distribution: it's lightning fast. It's also powerful (enough so that it replaced KDE as the default environment on Knoppix), and, unlike other light environments, it has a nice, modern look.

Installing the base package is easy: just use the **lxde** package in the universe repositories. For more advanced configuration, check out the instructions at <http://url.fullcirclemagazine.org/d63131>.



## ROX Desktop

If LXDE doesn't do the job for you, try out ROX Desktop. It's certainly not as pretty, but it's fast and powerful. Founded in 1999 by Thomas Leonard, ROX centers around the file manager. As the website puts it, ROX takes the view that the filesystem should be the main part of the operating system, rather than hiding "beneath start menus, wizards, or druids." ROX also favors applications with more specific features, rather than the do-it-all "mega" apps.

To install ROX, use the ROX-All instructions at <http://url.fullcirclemagazine.org/9b5c7b>.



## E17

Desktop environments like Gnome and KDE draw icons, trays, taskbars, login screens, and all the extras. Window managers, on the other hand, are more concerned with simply drawing windows. At least, that's the stereotype. E17, which stands for "Enlightenment 17", supports all the standard desktop environment features (icons, menus, etc.), but it does so oh-so-much-more elegantly. You can also simply use it as a window manager in conjunction with Gnome or KDE.

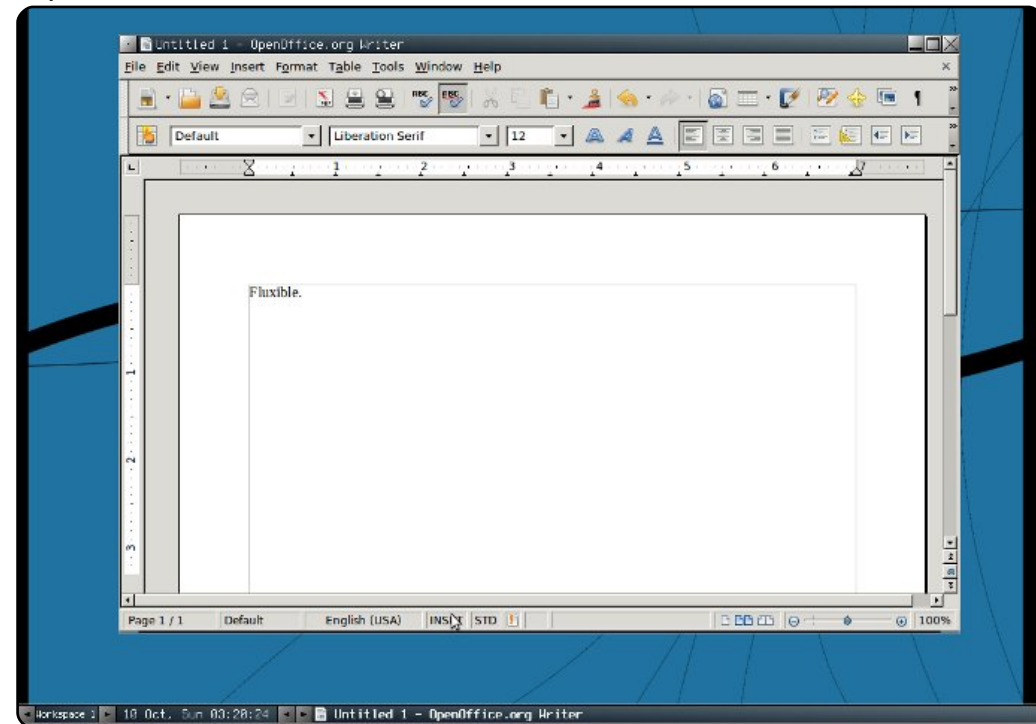
To install E17, use the **e17** package in the universe repositories.



## Fluxbox

Fluxbox, unlike Enlightenment, doesn't do too much outside of drawing windows. If you log in with a Fluxbox-only session, you'll be presented with a barebones taskbar and a clean desktop. There's a lot of customization available: one of the most highly touted features is the ability to, as the website notes, "set application-specific parameters for dimension, decoration, default workspace to open on, stickiness, and much more." There's also several other window options, most notably window tabbing. So if you're a power GUI user, Fluxbox is a great option.

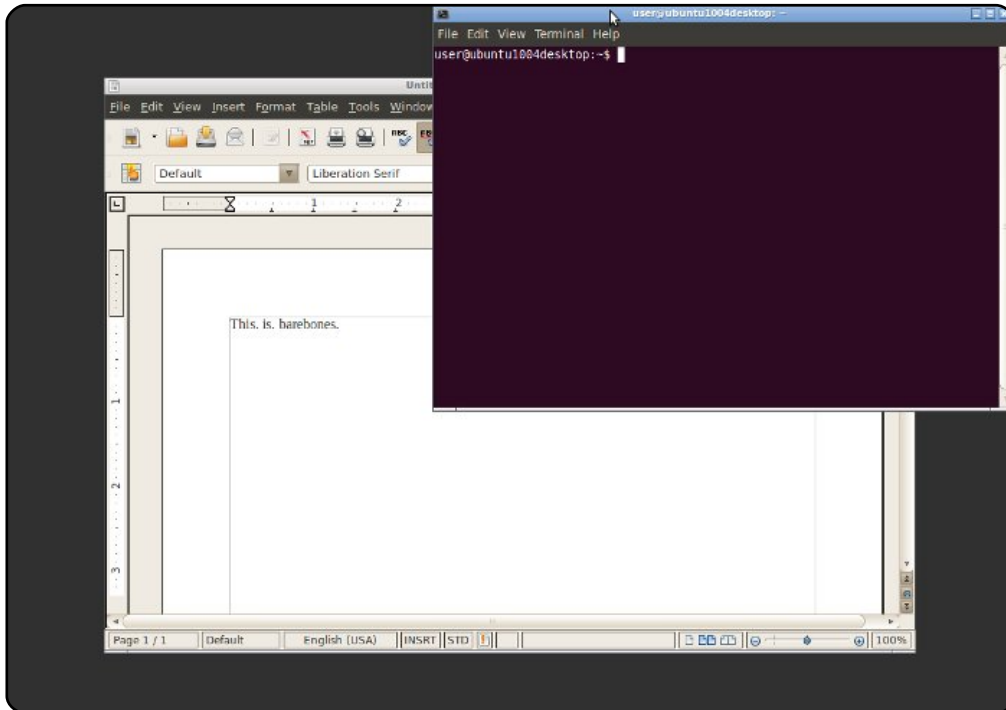
To install Fluxbox, use the **fluxbox** package in the universe repositories.



## Openbox

Openbox is another standalone window manager. Like Fluxbox, it doesn't really try to act like a desktop environment. If Gnome is a Ferrari, Openbox is four wheels, a chassis, and a seat. It's fast, it displays windows, and it works. It doesn't even display desktop icons. But, of course, it's blazing fast. You can also use it in conjunction with Gnome (as a replacement for Metacity) by selecting the Gnome/Openbox session at login. While the average user probably won't like it, Openbox does its job, and it does it well.

To install Openbox, use the *openbox* and *obconf* packages in the universe repositories.



The **Ubuntu UK podcast** is presented by members of the United Kingdom's Ubuntu Linux community.

We aim is to provide current, topical information about, and for, Ubuntu Linux users the world over. We cover all aspects of Ubuntu Linux and Free Software, and appeal to everyone from the newest user to the oldest coder, from the command line to the latest GUI.

Because the show is produced by the Ubuntu UK community, the podcast is covered by the Ubuntu Code of Conduct and is therefore suitable for all ages.

<http://podcast.ubuntu-uk.org/>



ubuntu uk podcast

Download

Available in MP3/OGG format in Miro, iTunes or listen to it directly on the site.





# HOW TO CONTRIBUTE

We are always looking for new articles to include in Full Circle. For article guidelines, ideas, and for issue translation, please see our wiki:

<http://wiki.ubuntu.com/UbuntuMagazine>

Please email your articles to: [articles@fullcirclemagazine.org](mailto:articles@fullcirclemagazine.org)

If you would like to submit **news**, email it to: [news@fullcirclemagazine.org](mailto:news@fullcirclemagazine.org)

Send your **comments** or Linux experiences to: [letters@fullcirclemagazine.org](mailto:letters@fullcirclemagazine.org)

Hardware/software **reviews** should be sent to: [reviews@fullcirclemagazine.org](mailto:reviews@fullcirclemagazine.org)

**Questions** for Q&A should go to: [questions@fullcirclemagazine.org](mailto:questions@fullcirclemagazine.org)

**Desktop** screens should be emailed to: [misc@fullcirclemagazine.org](mailto:misc@fullcirclemagazine.org)

... or you can visit our **forum** via: [www.fullcirclemagazine.org](http://www.fullcirclemagazine.org)

## FULL CIRCLE NEEDS YOU!

A magazine isn't a magazine without articles and Full Circle is no exception. We need your Opinions, Desktops and Stories. We also need Reviews (games, apps & hardware), How-To articles (on any K/X/Ubuntu subject) and any questions, or suggestions, you may have.

Send them to: [articles@fullcirclemagazine.org](mailto:articles@fullcirclemagazine.org)

## Full Circle Team



**Editor** - Ronnie Tucker

[ronnie@fullcirclemagazine.org](mailto:ronnie@fullcirclemagazine.org)

**Webmaster** - Rob Kerfia

[admin@fullcirclemagazine.org](mailto:admin@fullcirclemagazine.org)

**Comms Mgr** - Robert Clipsham

[mrmonday@fullcirclemagazine.org](mailto:mrmonday@fullcirclemagazine.org)

**Podcast** - Robin Catling

[podcast@fullcirclemagazine.org](mailto:podcast@fullcirclemagazine.org)

## Editing & Proofreading

Mike Kennedy

David Haas

Gord Campbell

Robert Orsino

Our thanks go out to Canonical, the many translation teams around the world and to **Thorsten Wilms** for the current Full Circle logo.

**Deadline for Issue #43:**

**Sunday 07th November 2010.**

**Release date for issue #43:**

**Friday 26th November 2010.**